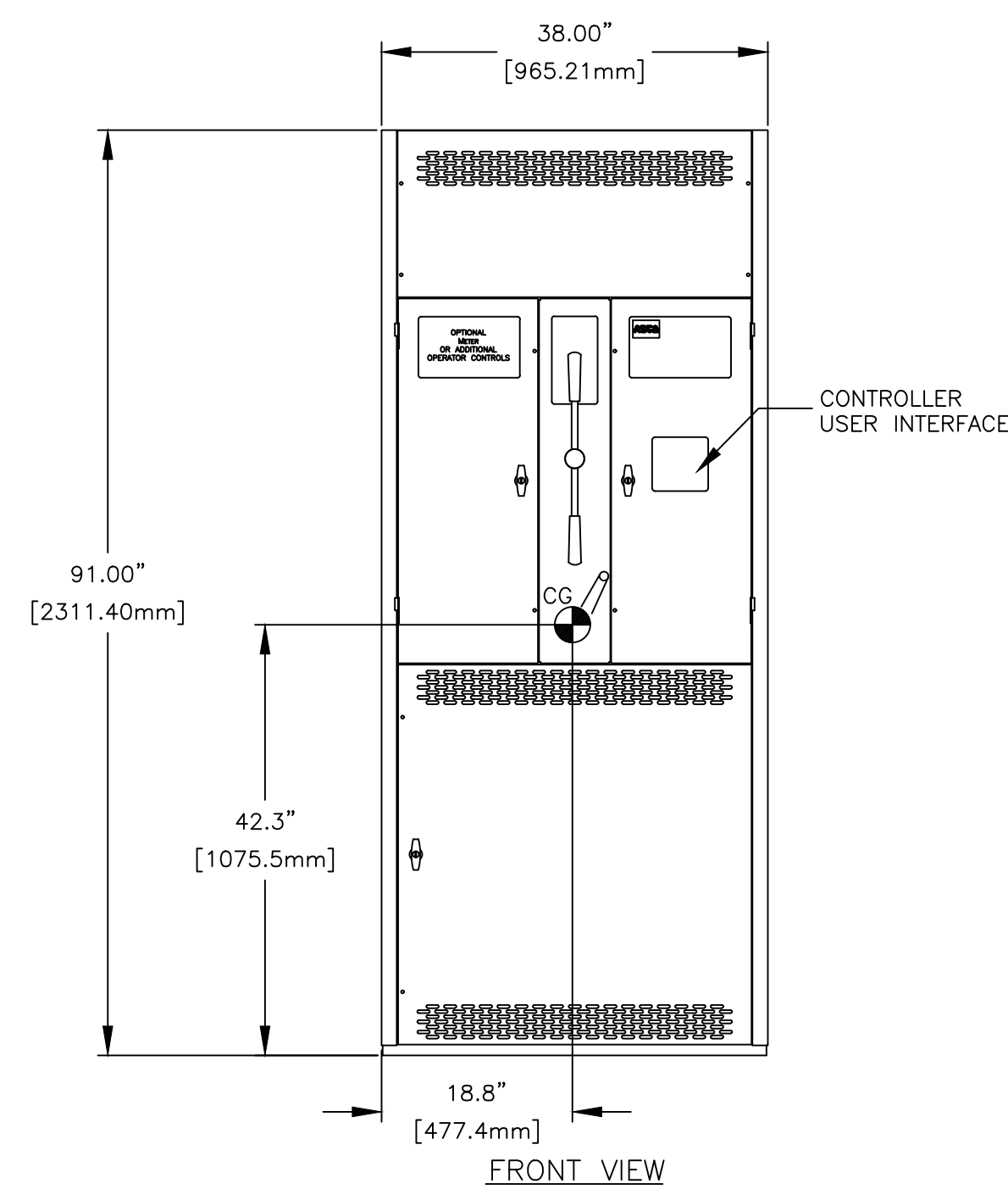
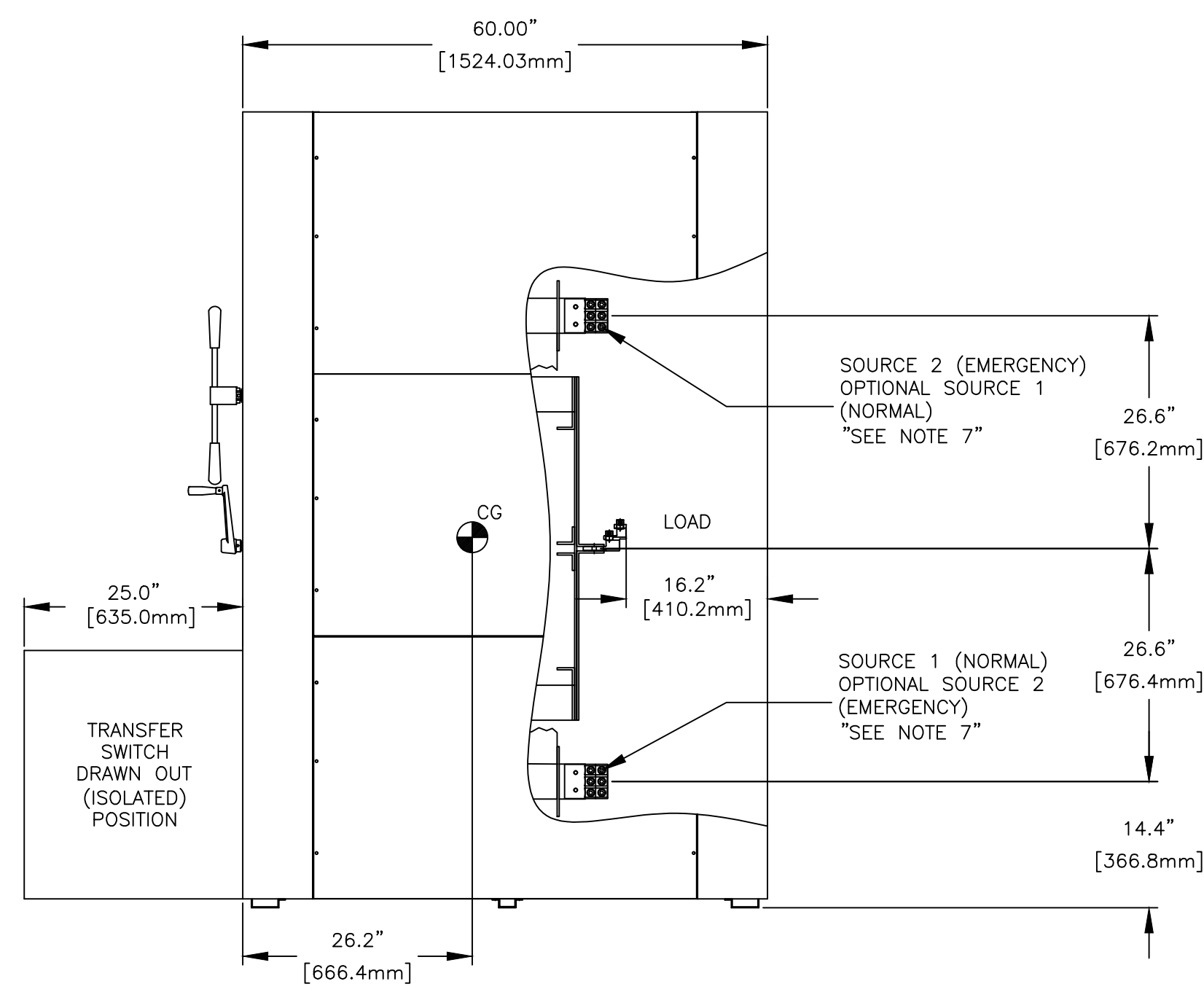


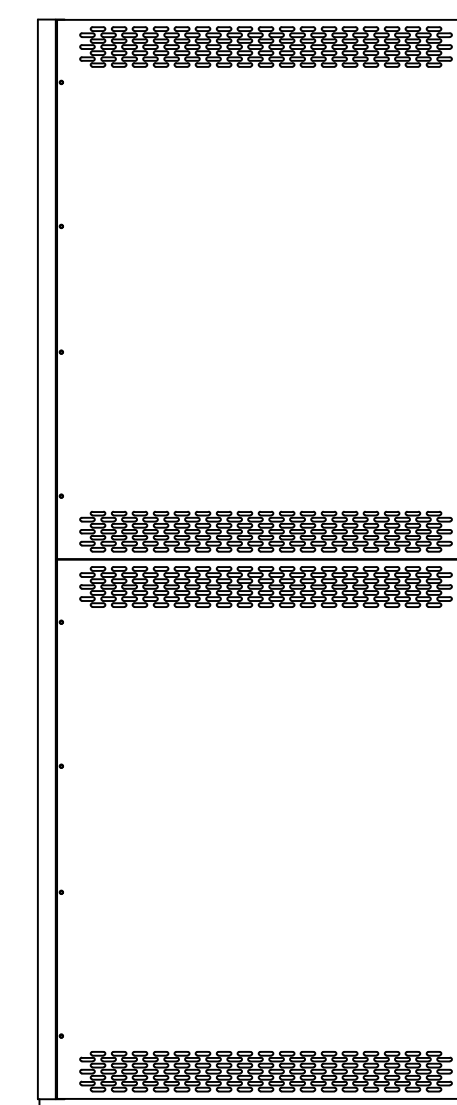
TOP VIEW



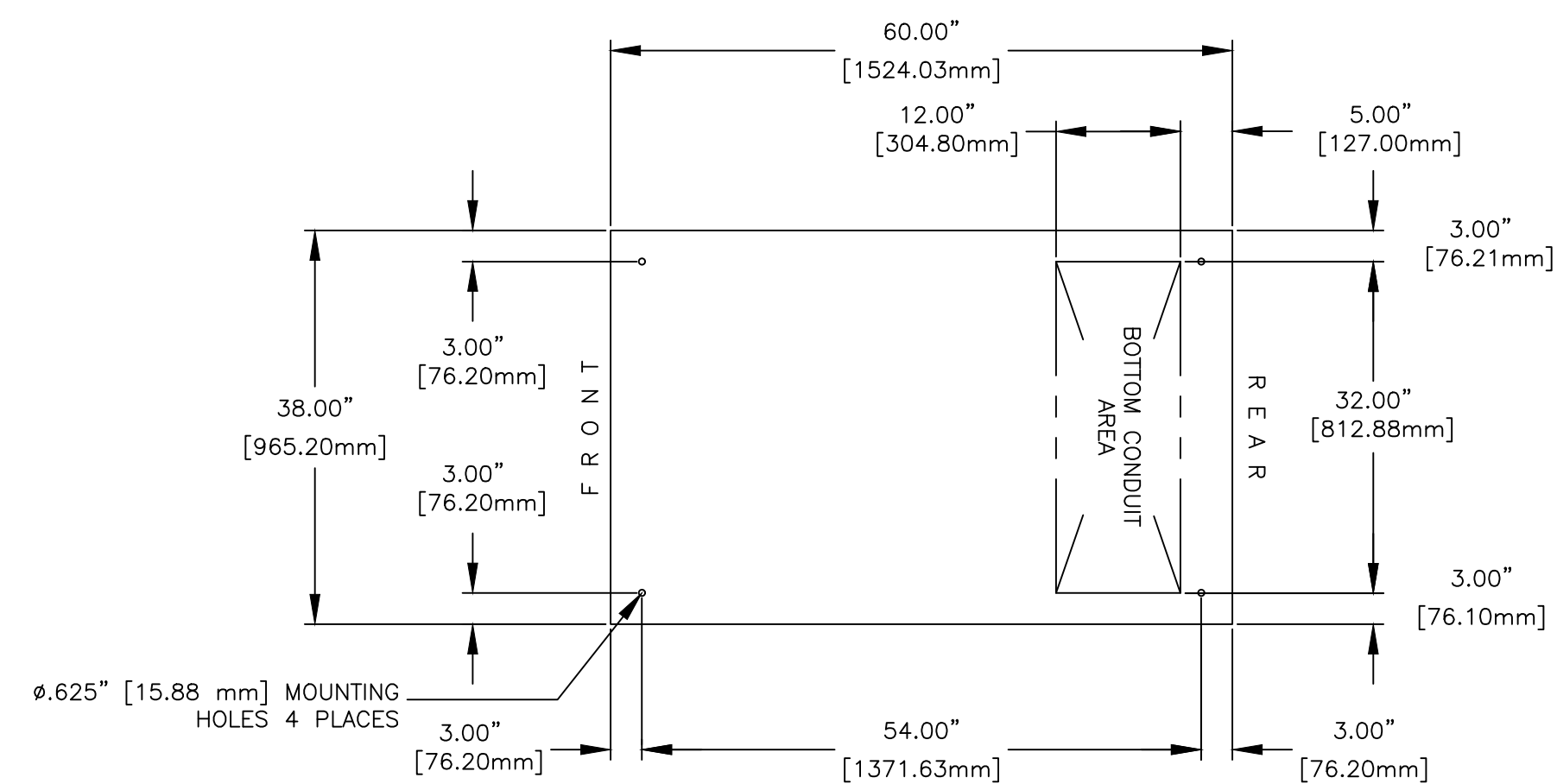
FRONT VIEW



RIGHT SIDE VIEW
WITHOUT COVERS



REAR VIEW



PLAN VIEW

GENERAL NOTES

- FLOOR MOUNTED ENCLOSURE.
TYPE 1 (C) CONSTRUCTED FROM CODE GAUGE STEEL.
FINISH TYPE: ANSI 61 GRAY POLYESTER SEMI GLOSS ELECTROSTATIC POWDER.
- DOOR EQUIPPED WITH A KEY LOCKING HANDLE
- DESIGNED FOR FRONT & REAR ACCESS.
- RECOMMENDED CLEARANCES: FRONT: 50" [1270.00mm] REAR: 30" [762mm]
- CENTER OF GRAVITY
- APPROXIMATE SHIPPING WEIGHT: 2785 LB [1263 KG].
- ACCESSORY 40, OPTIONAL SOURCE LOCATIONS IS AVAILABLE ON SERIES 7000 ONLY.

TRANSFER SWITCH

- G FRAME ISOLATION-BYPASS TRANSFER SWITCH.
- TRANSFER SWITCH RATING: 1000 AMPS, 1200 AMPS, 1600 AMPS AND 2000 AMPS.
WITHSTAND AND CLOSING RATING WHEN PROTECTED BY A CIRCUIT BREAKER WITHOUT AN ADJUSTABLE SHORT TIME RESPONSE,
1000A-1200A: MAXIMUM 0.05 SECONDS, 85,000 RMS SYM @ 240V, 480V, 600V
1600A-2000A: MAXIMUM 0.05 SECONDS, 100,000 RMS SYM @ 240V, 480V, 600V
WITHSTAND AND CLOSING RATING WHEN PROTECTED BY A CIRCUIT BREAKER WITH AN ADJUSTABLE SHORT TIME RESPONSE,
1600A-2000A: MAXIMUM 0.30 SECONDS, 42,000 RMS SYM @ 240V, 480V, 600V.
1600A-2000A: MAXIMUM 0.50 SECONDS, 36,000 RMS SYM @ 240V, 480V.
- A FULL RATED NEUTRAL CONNECTION FOR EACH SOURCE AND THE LOAD IS OPTIONAL. WHEN PROVIDED IT IS IN ONE OF THE FOLLOWING FORMATS.
 - SOLID NEUTRAL
 - SWITCHED NEUTRAL POLE
 - OVERLAPPING NEUTRAL POLE (NOT AVAILABLE ON ADTB & ACTB UNITS)
- UL 1008 OR CSA C22.2 No. 178.1

TERMINATIONS 1000A-1200A

- MECHANICAL (SCREW TYPE) LUGS FOR CU/AL CABLE.
SOURCE 1 (NORMAL): (4) 1/0-600MCM [50-300mm²] PER PHASE & NEUTRAL
LOAD: (4) 1/0-600MCM [50-300mm²] PER PHASE & NEUTRAL
SOURCE 2 (EMERGENCY): (4) 1/0-600MCM [50-300mm²] PER PHASE & NEUTRAL
GROUND: (12) 1/0-600MCM [50-300mm²]
A. SUITABLE WIRE BENDING SPACE IS PROVIDED AS PER NEC.
- SWITCH MAY BE SUPPLIED WITHOUT LUGS.
- OPTIONAL LUGS MAY BE SUPPLIED (MAY AFFECT ENCLOSURE SIZE).

TERMINATIONS 1600A-2000A

- MECHANICAL (SCREW TYPE) LUGS FOR CU/AL CABLE.
SOURCE 1 (NORMAL): (6) 1/0-600MCM [50-300mm²] PER PHASE & NEUTRAL
LOAD: (6) 1/0-600MCM [50-300mm²] PER PHASE & NEUTRAL
SOURCE 2 (EMERGENCY): (6) 1/0-600MCM [50-300mm²] PER PHASE & NEUTRAL
GROUND: (18) 1/0-600MCM [50-300mm²]
A. SUITABLE WIRE BENDING SPACE IS PROVIDED AS PER NEC.
- SWITCH MAY BE SUPPLIED WITHOUT LUGS.
- OPTIONAL LUGS MAY BE SUPPLIED (MAY AFFECT ENCLOSURE SIZE).

WIRING/CABLING

- USE 90°C MINIMUM CU/AL WIRE FOR POWER CABLES.
- WIRE SIZE TO BE BASED ON AMPACITY OF 75°C WIRE.
- USE 60°C MINIMUM CU WIRE FOR CONTROLS.

M	303562	SV	05-12-23
L	289897	TR	MM 06/14/21

PROJECT NAME:		COMPUTER GENERATED DRAWING	
OUTLINE		MOUNTING	
GATB 1000A-2000A		SCALE 1/16" = 1" SIZE DS	
TYPE 1 91 X 38 X 60		DWG. NO. 617441	
BY	DATE	MANUFACTURING TOLERANCES TO BE IN ACCORDANCE WITH ASCO PROCEDURE MP-1-003. FOR PLASTIC PARTS SEE MP-1-055	ASSEM. REF. NO.
SV	05-12-23		
CHECKED		PROPERTY OF ASCO POWER TECHNOLOGIES. USE PERMITTED FOR OUR WORK ONLY. ALL RIGHTS OF DESIGN OR INVENTION ARE RESERVED.	
PROJECT APPROVAL			
FINAL APPROVAL		ASCO POWER TECHNOLOGIES, LP. FLORHAM PARK, NEW JERSEY 07932 U.S.A.	DRAWING M. REV. 303562 SHEET 1 OF 1