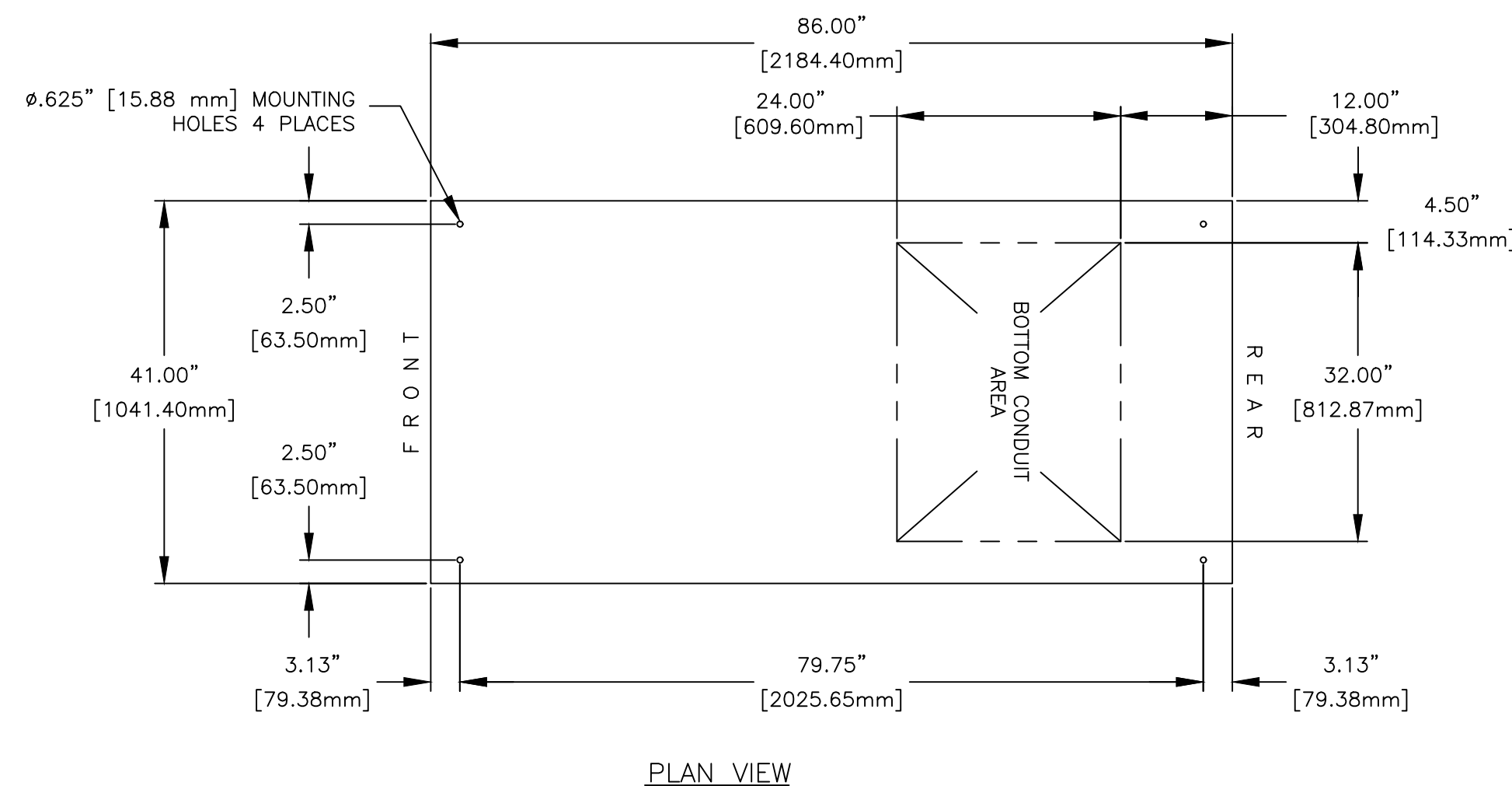
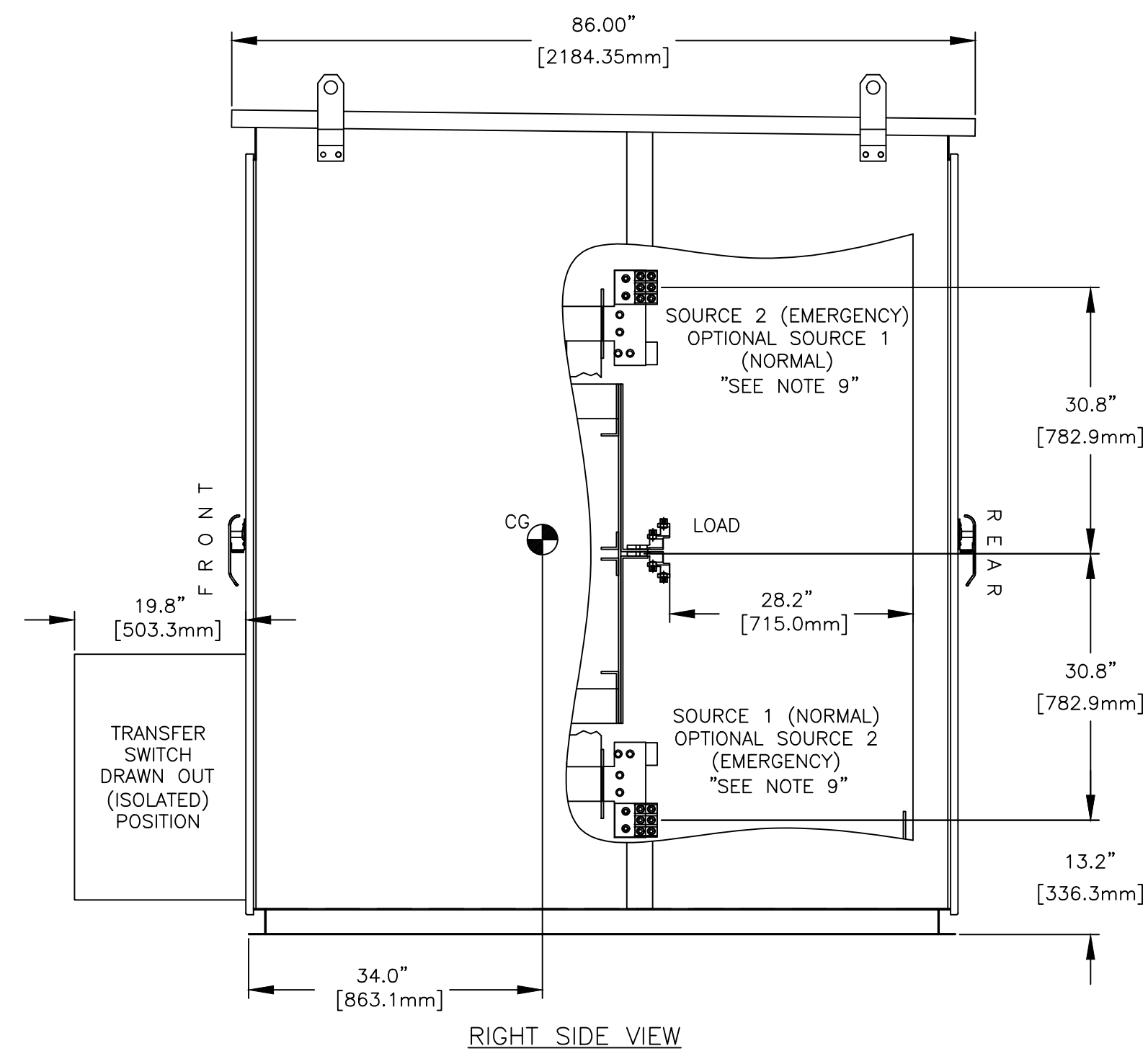
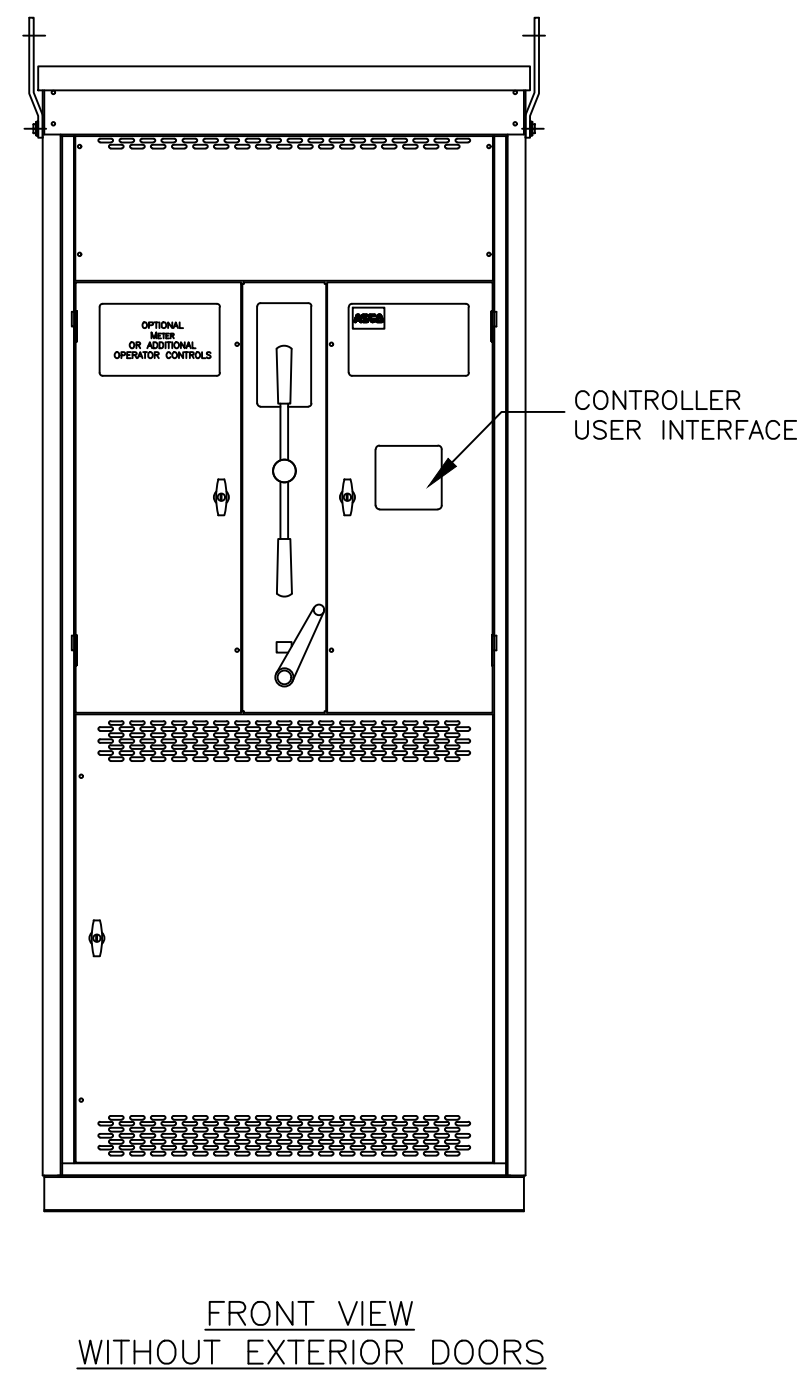
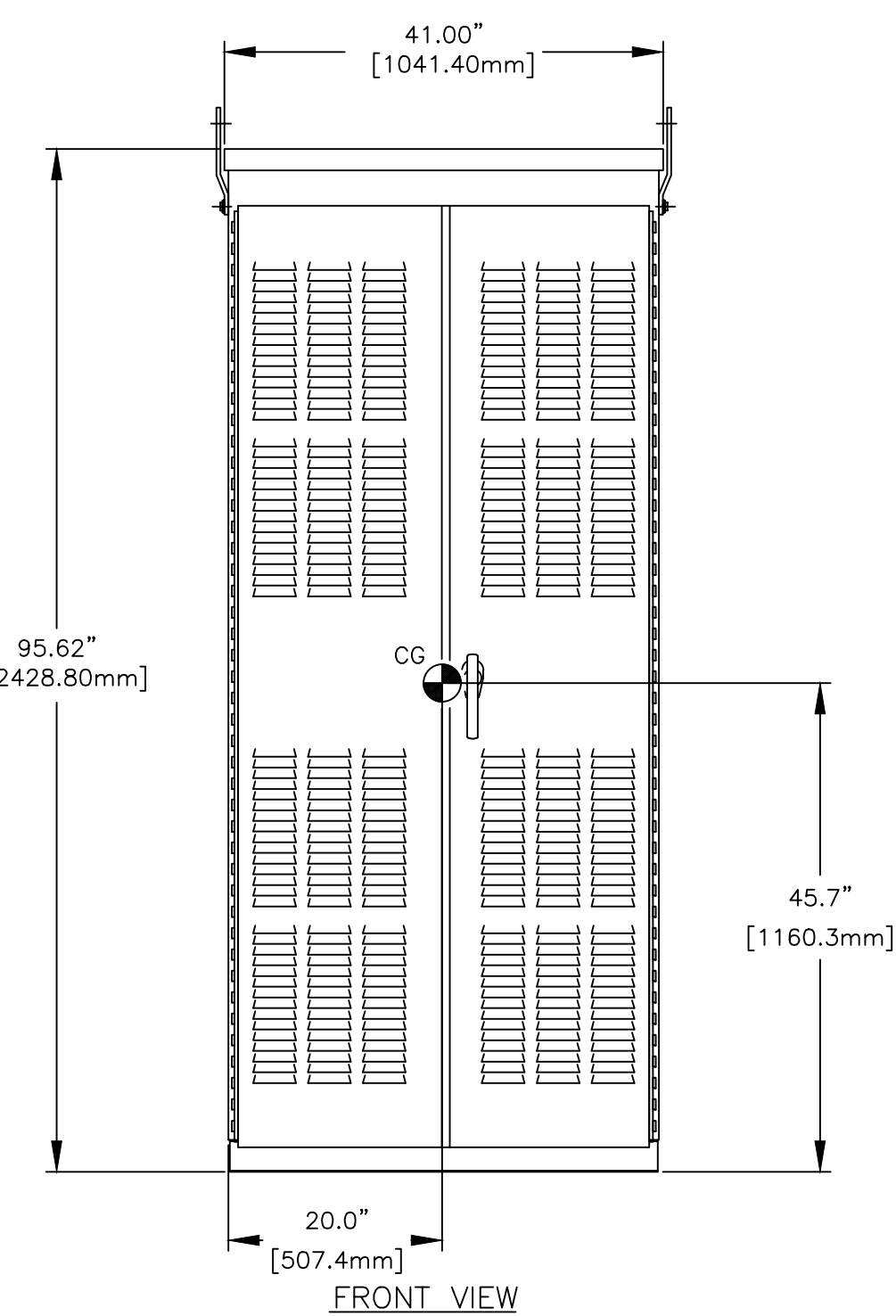
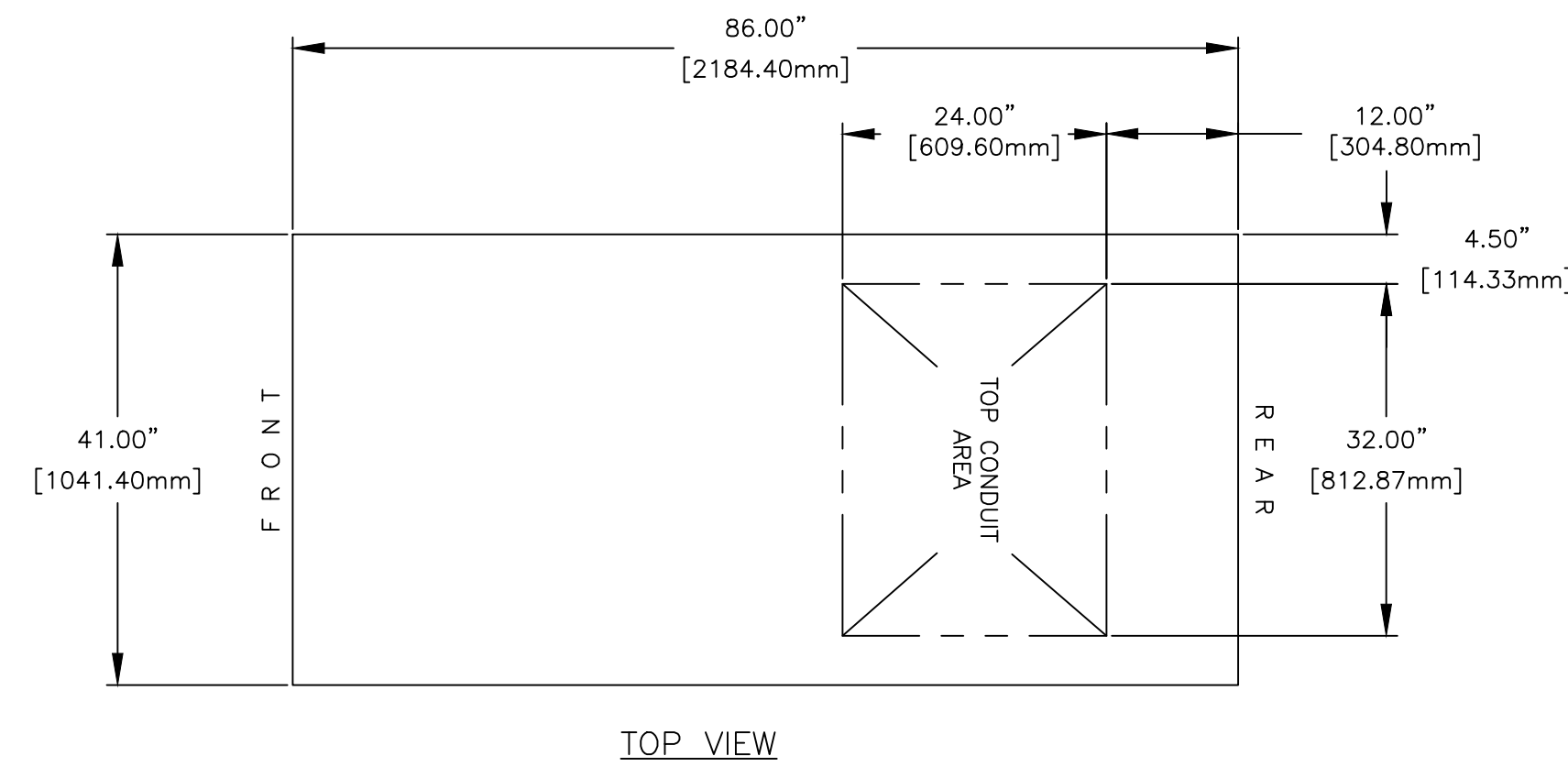


GENERAL NOTES

- FLOOR MOUNTED ENCLOSURE.
TYPE 3R (M) CONSTRUCTED FROM CODE GAUGE STEEL.
FINISH TYPE: ANSI 61 GRAY POLYESTER SEMI GLOSS ELECTROSTATIC POWDER.
TYPE 3RX (R) EXTERIOR CONSTRUCTED FROM CODE GAUGE TYPE 304 STAINLESS STEEL.
TYPE 3RX (S) EXTERIOR CONSTRUCTED FROM CODE GAUGE TYPE 316 STAINLESS STEEL.
- EXTERIOR DOOR HAVE PADLOCKABLE HANDLES WITH 3-POINT LATCH
- DESIGNED FOR FRONT & REAR ACCESS.
- RECOMMENDED CLEARANCES: FRONT: 44" [1117.60mm] REAR: 30" [762mm]
- EXTERIOR VENTS ARE SUPPLIED WITH POLYESTER DUST FILTERS.
- LIFTING PLATES: SECTIONS ARE SUPPLIED WITH LIFTING PLATES. INSPECT PLATES FOR DAMAGE AND TORQUE BOLTS TO 45 FT LBS [61 N m] BEFORE USE. REFER TO ANSI/NEMA PB 2.1 FOR PROPER HANDLING OF EQUIPMENT. AFTER INSTALLATION OF SECTION, REMOVE LIFTING PLATES. REINSTALL BOLTS INTO EXTERIOR HOLES AND TORQUE TO APPROXIMATELY 20 FT LBS [27 N m].
- ☉ CENTER OF GRAVITY
- APPROXIMATE SHIPPING WEIGHT: 3500 LB [1587.5 KG].
- ACCESSORY 40, OPTIONAL SOURCE LOCATIONS IS AVAILABLE ON SERIES 7000 ONLY.

TRANSFER SWITCH

- G FRAME ISOLATION-BYPASS TRANSFER SWITCH.
- TRANSFER SWITCH RATING: 1000 AMPS, 1200 AMPS, 1600 AMPS, 2000 AMPS, 2600 AMPS. AND 3000 AMPS.
WITHSTAND AND CLOSING RATING WHEN PROTECTED BY A CIRCUIT BREAKER WITHOUT AN ADJUSTABLE SHORT TIME RESPONSE,
1000A-1200A: MAXIMUM 0.05 SECONDS, 85,000 RMS SYM @ 240V, 480V, 600V
1600A-3000A: MAXIMUM 0.05 SECONDS, 100,000 RMS SYM @ 240V, 480V, 600V
WITHSTAND AND CLOSING RATING WHEN PROTECTED BY A CIRCUIT BREAKER WITH AN ADJUSTABLE SHORT TIME RESPONSE,
1600A-3000A: MAXIMUM 0.30 SECONDS, 42,000 RMS SYM @ 240V, 480V, 600V.
1600A-3000A: MAXIMUM 0.50 SECONDS, 36,000 RMS SYM @ 240V, 480V.
- A FULL RATED NEUTRAL CONNECTION FOR EACH SOURCE AND THE LOAD IS OPTIONAL. WHEN PROVIDED IT IS IN ONE OF THE FOLLOWING FORMATS.
A. SOLID NEUTRAL
B. SWITCHED NEUTRAL POLE
C. OVERLAPPING NEUTRAL POLE (NOT AVAILABLE ON ADTB & ACTB UNITS)
- UL 1008 OR CSA C22.2 No. 178.1



TERMINATIONS 1000A-1200A (ACC. 42 ONLY)

- MECHANICAL (SCREW TYPE) LUGS FOR CU/AL CABLE.
SOURCE 1 (NORMAL): (4) 1/0-600MCM [50-300mm²] PER PHASE & NEUTRAL
LOAD: (4) 1/0-600MCM [50-300mm²] PER PHASE & NEUTRAL
SOURCE 2 (EMERGENCY): (4) 1/0-600MCM [50-300mm²] PER PHASE & NEUTRAL
GROUND: (12) 1/0-600MCM [50-300mm²]
A. SUITABLE WIRE BENDING SPACE IS PROVIDED AS PER NEC.
- SWITCH MAY BE SUPPLIED WITHOUT LUGS.
- OPTIONAL LUGS MAY BE SUPPLIED (MAY AFFECT ENCLOSURE SIZE).

TERMINATIONS 1600A-2000A (ACC. 42 ONLY)

- MECHANICAL (SCREW TYPE) LUGS FOR CU/AL CABLE.
SOURCE 1 (NORMAL): (6) 1/0-600MCM [50-300mm²] PER PHASE & NEUTRAL
LOAD: (6) 1/0-600MCM [50-300mm²] PER PHASE & NEUTRAL
SOURCE 2 (EMERGENCY): (6) 1/0-600MCM [50-300mm²] PER PHASE & NEUTRAL
GROUND: (18) 1/0-600MCM [50-300mm²]
A. SUITABLE WIRE BENDING SPACE IS PROVIDED AS PER NEC.
- SWITCH MAY BE SUPPLIED WITHOUT LUGS.
- OPTIONAL LUGS MAY BE SUPPLIED (MAY AFFECT ENCLOSURE SIZE).

TERMINATIONS 2600A-3000A

- MECHANICAL (SCREW TYPE) LUGS FOR CU/AL CABLE.
SOURCE 1 (NORMAL): (10) 1/0-600MCM [50-300mm²] PER PHASE & NEUTRAL
LOAD: (10) 1/0-600MCM [50-300mm²] PER PHASE & NEUTRAL
SOURCE 2 (EMERGENCY): (10) 1/0-600MCM [50-300mm²] PER PHASE & NEUTRAL
GROUND: (30) 1/0-600MCM [50-300mm²]
A. SUITABLE WIRE BENDING SPACE IS PROVIDED AS PER NEC.
- SWITCH MAY BE SUPPLIED WITHOUT LUGS.
- OPTIONAL LUGS MAY BE SUPPLIED (MAY AFFECT ENCLOSURE SIZE).

WIRING/CABLING

- USE 90°C MINIMUM CU/AL WIRE FOR POWER CABLES.
- WIRE SIZE TO BE BASED ON AMPACITY OF 75°C WIRE.
- USE 60°C MINIMUM CU WIRE FOR CONTROLS.

REV. TO SHEET	ECN NO.	BY	APP.	DATE
D	303562	SV		05-12-23
C	289897	TR	MM	06/14/21
PROJECT NAME: OUTLINE MOUNTING				
GATB 1000A-3000A				
TYPE 3R/3RX 96 X 41 X 86				
DRAWN BY	BY	DATE	MANUFACTURING TOLERANCES TO BE IN ACCORDANCE WITH ASCO PROCEDURE MP-1-003. FOR PLASTIC PARTS SEE MP-1-055	
CHECKED	SV	05-12-23	ASSEM. REF. NO.	
PROJECT APPROVAL			PROPERTY OF ASCO POWER TECHNOLOGIES. USE PERMITTED FOR OUR WORK ONLY. ALL RIGHTS OF DESIGN OR INVENTION ARE RESERVED.	
FINAL APPROVAL			COMPUTER GENERATED DRAWING	
			SCALE 1/16" = 1" SIZE	DS
			DWG. NO.	727400-020
			ASCOTM ASCO POWER TECHNOLOGIES, LP.	DRAWING REV. D
			FLORHAM PARK, NEW JERSEY 07932 U.S.A.	ECN NO. 303562
				SHEET 1 OF 1