

GENERAL NOTES

- FLOOR MOUNTED ENCLOSURE.
TYPE 1 (C) CONSTRUCTED FROM CODE GAUGE STEEL.
FINISH TYPE: ANSI 61 GRAY POLYESTER SEMI GLOSS ELECTROSTATIC POWDER.
- DOOR EQUIPPED WITH A KEY LOCKING HANDLE
- DESIGNED FOR FRONT ACCESS.
- RECOMMENDED CLEARANCES: FRONT: 40" [1016.00mm] REAR: 5.00" [127mm].
- OPTIONAL LEFT OR RIGHT PULL BOX AVAILABLE FOR TOP AND BOTTOM CABLE ACCESS.
PULL BOX MUST BE ORDERED SEPARATELY AND FIELD INSTALLED.
- ☉ CENTER OF GRAVITY
- APPROXIMATE SHIPPING WEIGHT: 1550 LB [703 KG].

TRANSFER SWITCH

- H FRAME ISOLATION-BYPASS TRANSFER SWITCH.
- TRANSFER SWITCH RATING: 600 AMPS, 800 AMPS.
WITHSTAND AND CLOSING RATING WHEN PROTECTED BY A CIRCUIT BREAKER WITHOUT AN ADJUSTABLE SHORT TIME RESPONSE,
MAXIMUM 0.05 SECONDS: 50,000 RMS SYM @ 240V, 480V, 600V.
WITHSTAND AND CLOSING RATING WHEN PROTECTED BY A CIRCUIT BREAKER WITH AN ADJUSTABLE SHORT TIME RESPONSE,
MAXIMUM 0.30 SECONDS: 36,000 RMS SYM @ 240V, 480V, 600V.
- A FULL RATED NEUTRAL CONNECTION FOR EACH SOURCE AND THE LOAD IS OPTIONAL. WHEN PROVIDED IT IS IN ONE OF THE FOLLOWING FORMATS.
 - SOLID NEUTRAL
 - SWITCHED NEUTRAL POLE
 - OVERLAPPING NEUTRAL POLE (NOT AVAILABLE ON ADTB & ACTB UNITS)
- UL 1008 OR CSA C22.2 No. 178.1

TERMINATIONS 600A

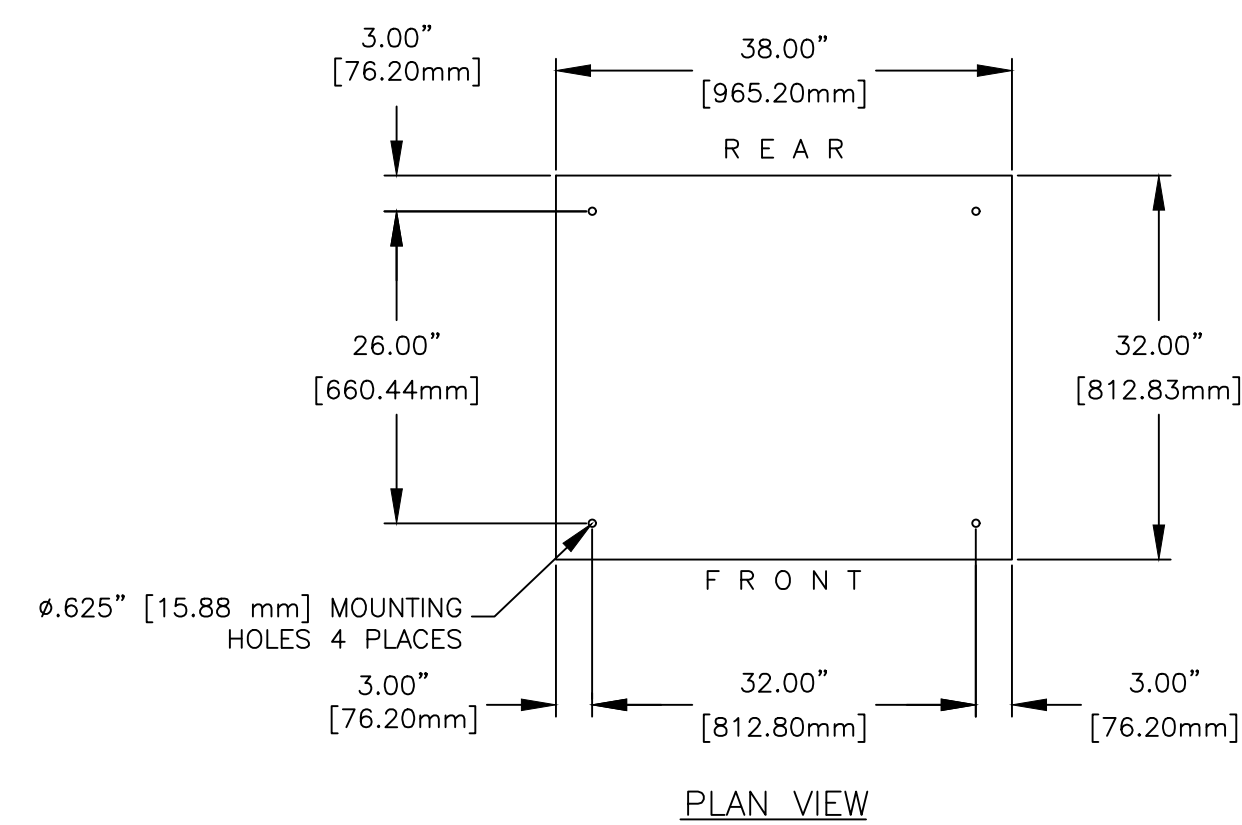
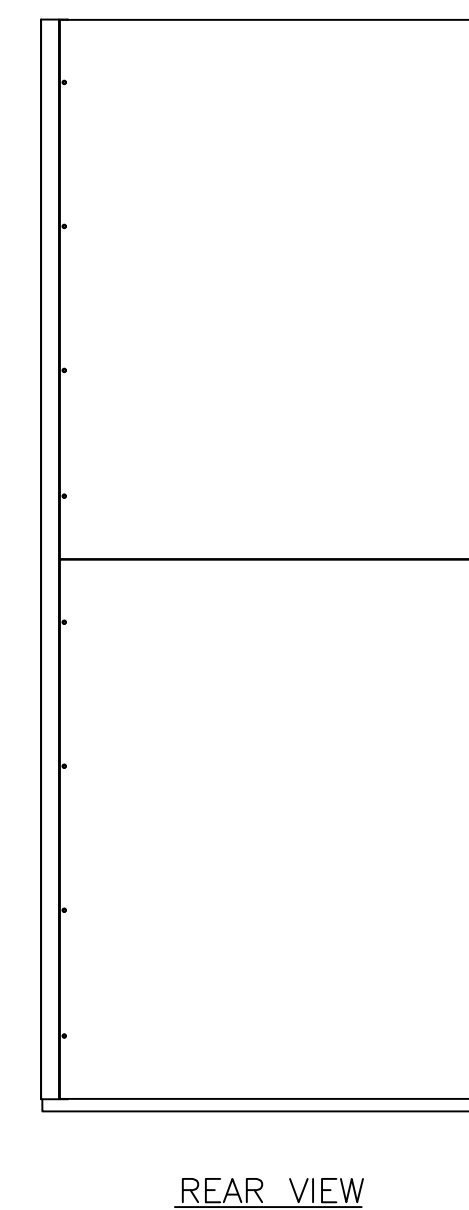
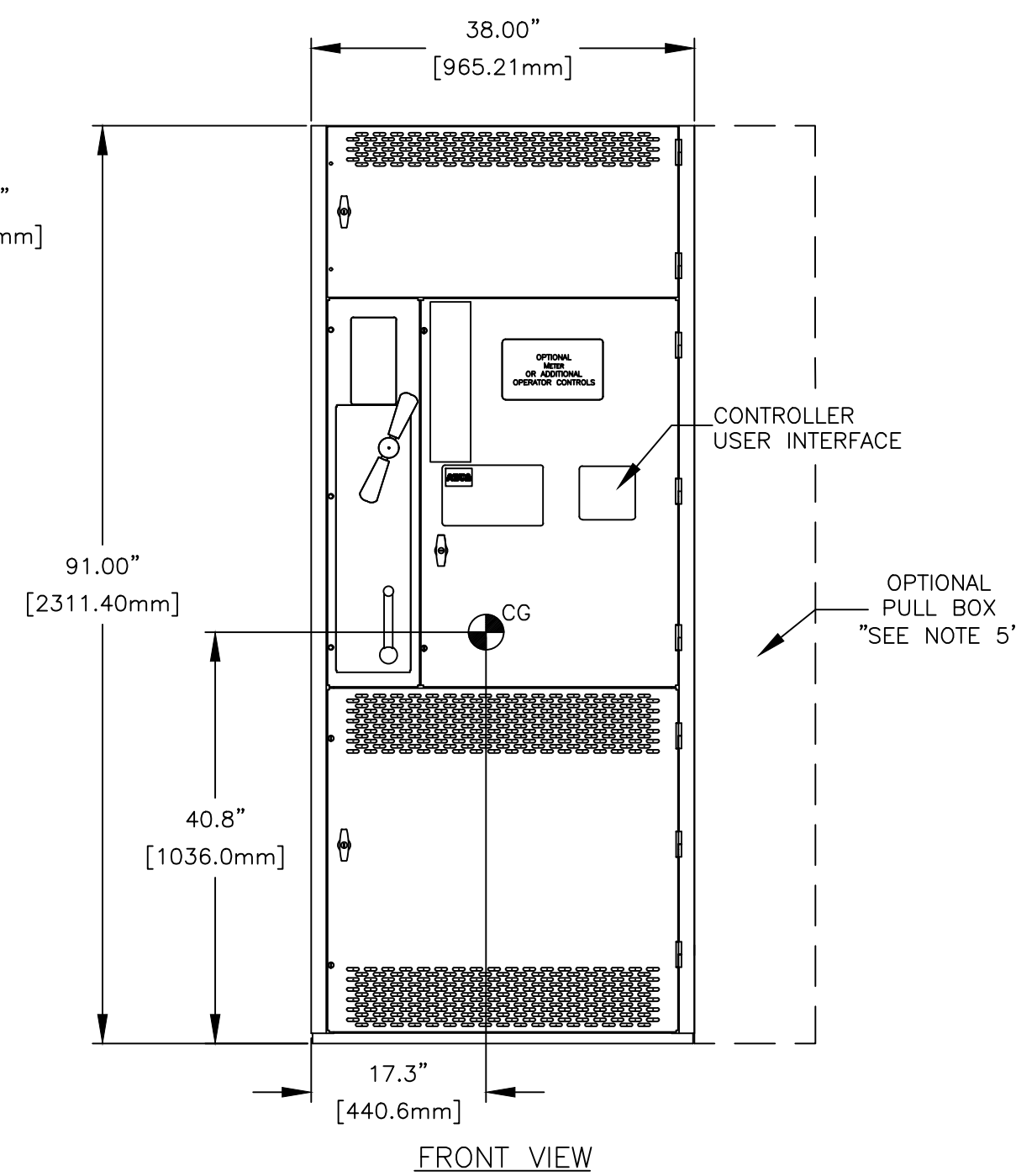
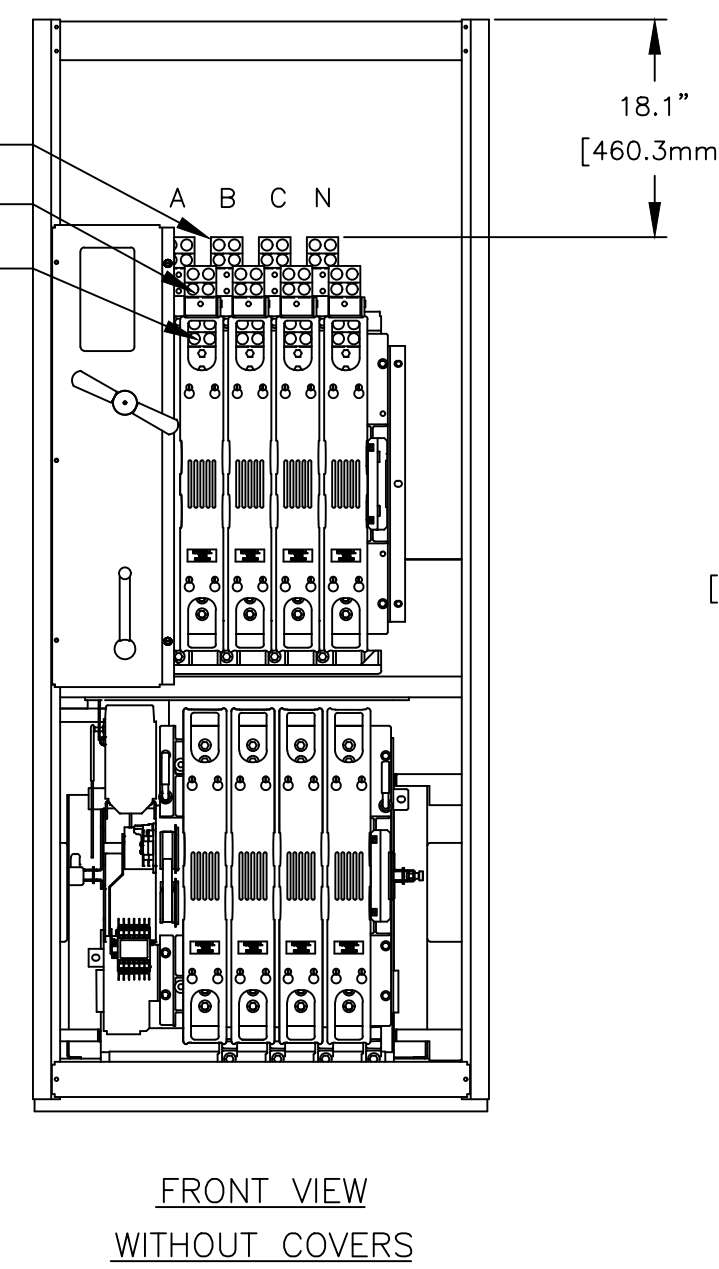
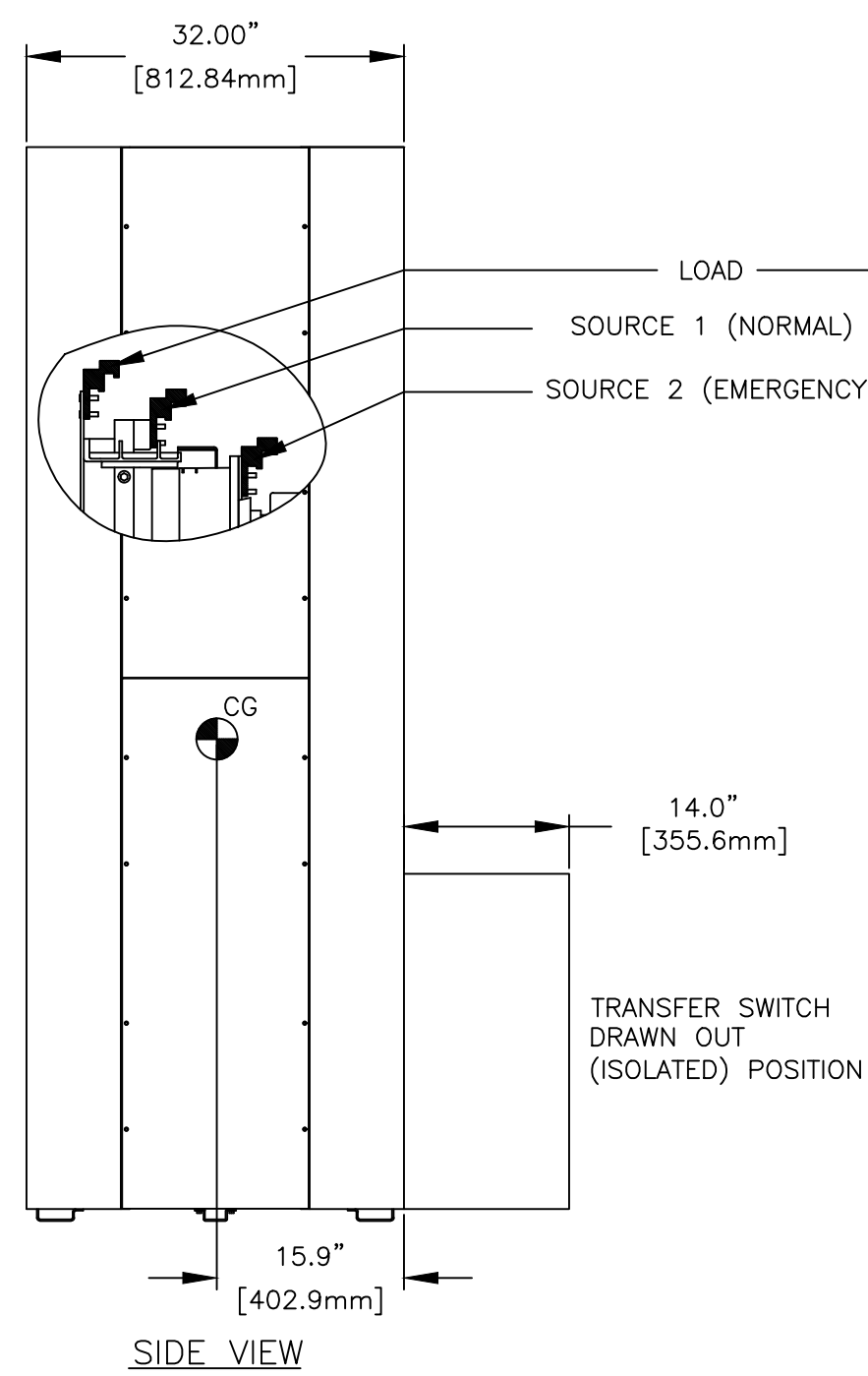
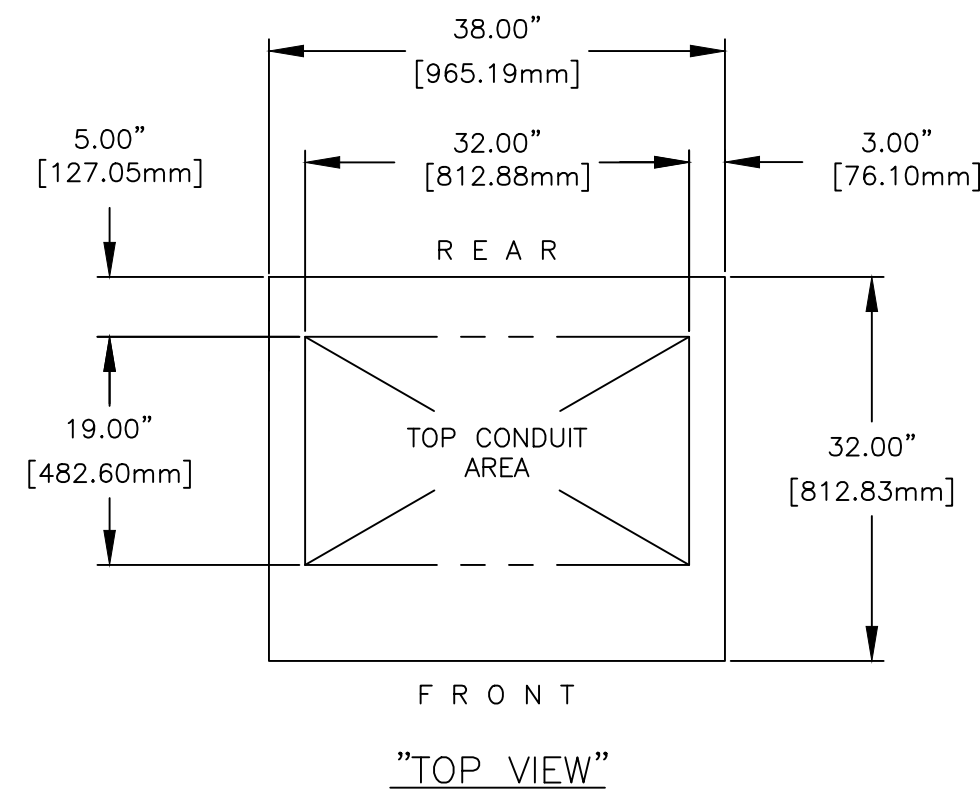
- MECHANICAL (SCREW TYPE) LUGS FOR CU/AL CABLE.
SOURCE 1 (NORMAL): (2) 1/0-600MCM [50-300mm²] PER PHASE & NEUTRAL
LOAD: (2) 1/0-600MCM [50-300mm²] PER PHASE & NEUTRAL
SOURCE 2 (EMERGENCY): (2) 1/0-600MCM [50-300mm²] PER PHASE & NEUTRAL
GROUND: (6) 1/0-600MCM [50-300mm²]
A. SUITABLE WIRE BENDING SPACE IS PROVIDED AS PER NEC.
- SWITCH MAY BE SUPPLIED WITHOUT LUGS.
- OPTIONAL LUGS MAY BE SUPPLIED (MAY AFFECT ENCLOSURE SIZE).

TERMINATIONS 800A

- MECHANICAL (SCREW TYPE) LUGS FOR CU/AL CABLE.
SOURCE 1 (NORMAL): (3) 1/0-600MCM [50-300mm²] PER PHASE & NEUTRAL
LOAD: (3) 1/0-600MCM [50-300mm²] PER PHASE & NEUTRAL
SOURCE 2 (EMERGENCY): (3) 1/0-600MCM [50-300mm²] PER PHASE & NEUTRAL
GROUND: (9) 1/0-600MCM [50-300mm²]
A. SUITABLE WIRE BENDING SPACE IS PROVIDED AS PER NEC.
- SWITCH MAY BE SUPPLIED WITHOUT LUGS.
- OPTIONAL LUGS MAY BE SUPPLIED (MAY AFFECT ENCLOSURE SIZE).

WIRING/CABLING

- USE 90°C MINIMUM CU/AL WIRE FOR POWER CABLES.
- WIRE SIZE TO BE BASED ON AMPACITY OF 75°C WIRE.
- USE 60°C MINIMUM CU WIRE FOR CONTROLS.



M	303561	SV	05-12-23
L	297878	MZ	DGB 07/19/22

PROJECT NAME:		REV. TO SHEET	ECN NO.	BY	APP.	DATE
OUTLINE		MOUNTING				
HATB 600A-800A, FRONT CONNECTED						
TYPE 1 91 X 38 X 32						
DRAWN BY	BY	DATE	MANUFACTURING TOLERANCES TO BE IN ACCORDANCE WITH ASCO PROCEDURE MP-1-003. FOR PLASTIC PARTS SEE MP-1-055		ASSEM. REF. NO.	COMPUTER GENERATED DRAWING
CHECKED	SV	05-12-23				SCALE 1/16" = 1" SIZE DS
PROJECT APPROVAL			PROPERTY OF ASCO POWER TECHNOLOGIES. USE PERMITTED FOR OUR WORK ONLY. ALL RIGHTS OF DESIGN OR INVENTION ARE RESERVED.			DWG. NO. 748664
FINAL APPROVAL			ASCO POWER TECHNOLOGIES, LP. FLORHAM PARK, NEW JERSEY 07932 U.S.A.			DRAWING M REV. ECN NO. 303561 SHEET 1 OF 1