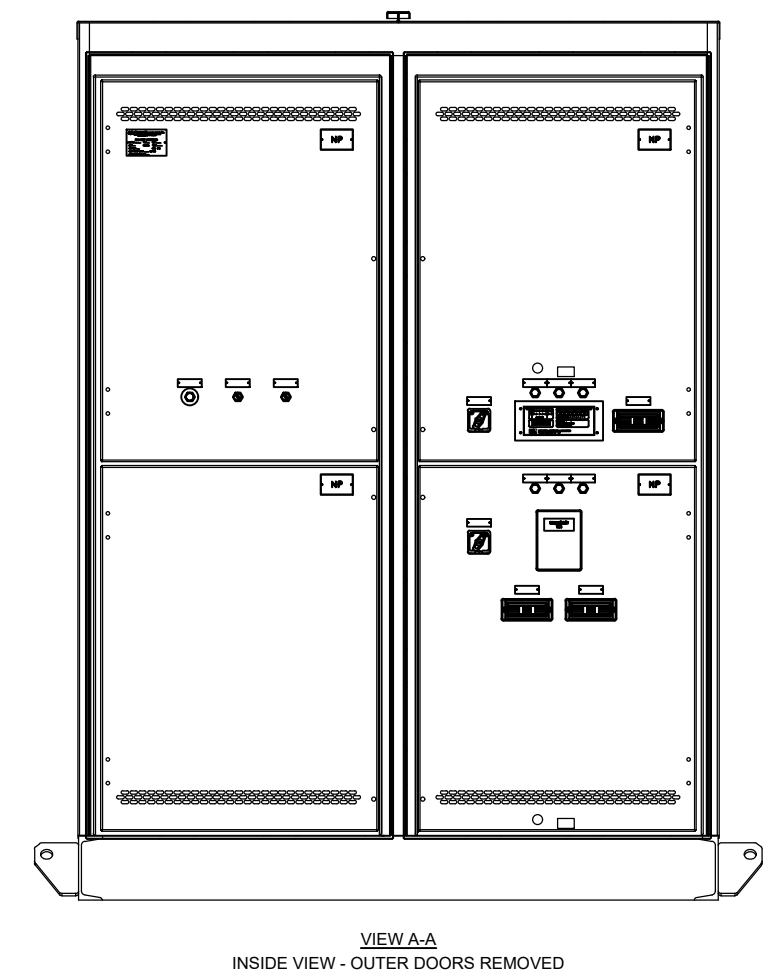
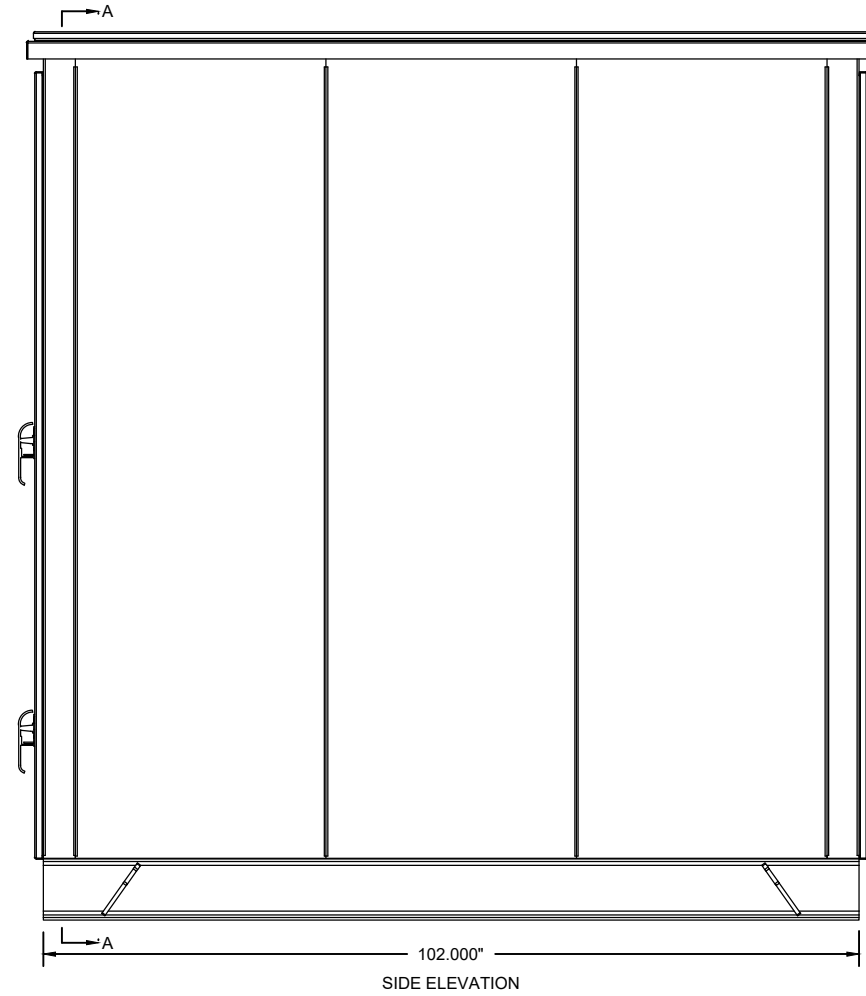
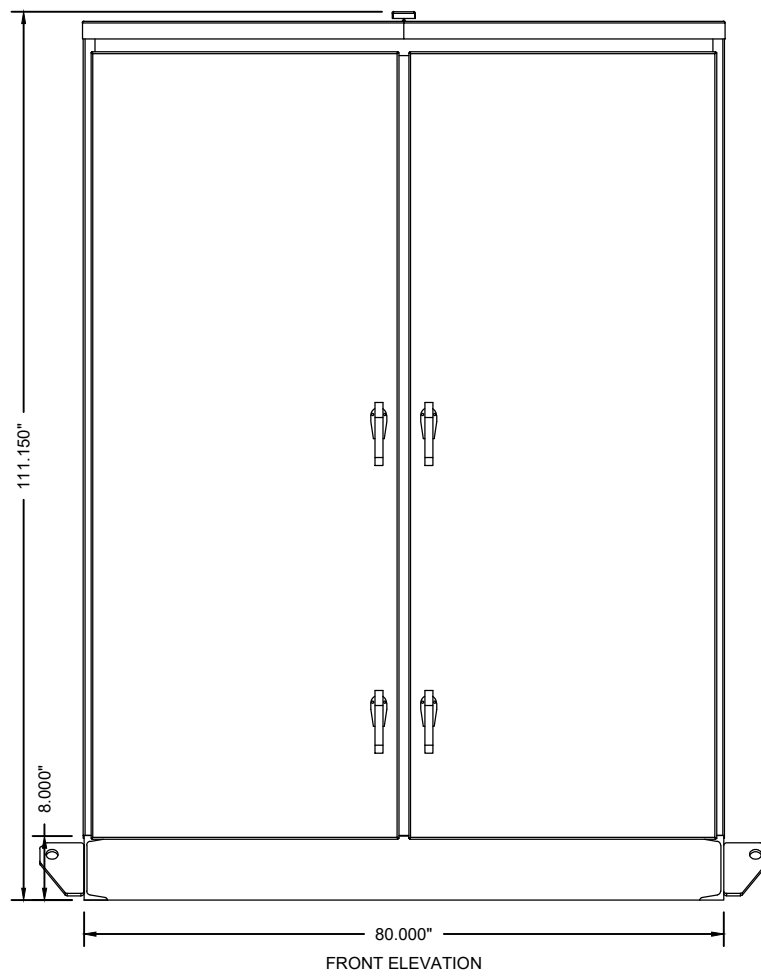


8 7 6 5 4 3 2 1

H
G
F
E
D
C
B
A

H
G
F
E
D
C
B
A



- CONSTRUCTION NOTES:**
- 1, SWITCHGEAR POWER STRUCTURES BY SQUARE-D.
 - 2, OUTDOOR ENCLOSURE STRUCTURE BY STATES MFG.
 - 3, OUTDOOR ENCLOSURE MATERIAL TO BE 12GA. GALVNEAL..
 - 4, BASE FRAME SHALL BE MC 8"x18.8# STRUCTURAL CHANNEL.
4 LIFTING EYES WELDED TO CHANNEL.
 - 5, COLOR SHALL BE ANSI 61 LIGHT GREY.
 - 6, BUS SHALL BE COPPER, RATED 1200A.
 - 7, SWITCHGEAR SHALL BE 12.47KV, MAX 15KV, 500MVA.
 - 8, BUS PHASING SHALL BE A-B-C LEFT TO RIGHT, FRONT TO BACK, TOP TO BOTTOM WHEN VIEWED FROM THE FRONT.
 - 9, GROUND BUS SHALL BE 1/2" x 2" COPPER.
 - 10, FRONT AND REAR DOORS SHALL BE HINGED WITH CONTINUOUS PIANO TYPE HINGE AND SECURED WITH PAD-LOCKABLE HANDLES.
 - 11, SWITCHGEAR IS DESIGNED FOR CLOCKWISE ROTATION.
 - 12, CONDUIT ENTRY IS BOTTOM ENTRY.
 - 13, CONTROL WIRES SHALL BE RUN SEPARATE FROM POWER CONDUCTORS.
 - 14, STRIP HEATERS SHALL BE PROVIDED IN EACH SECTION.

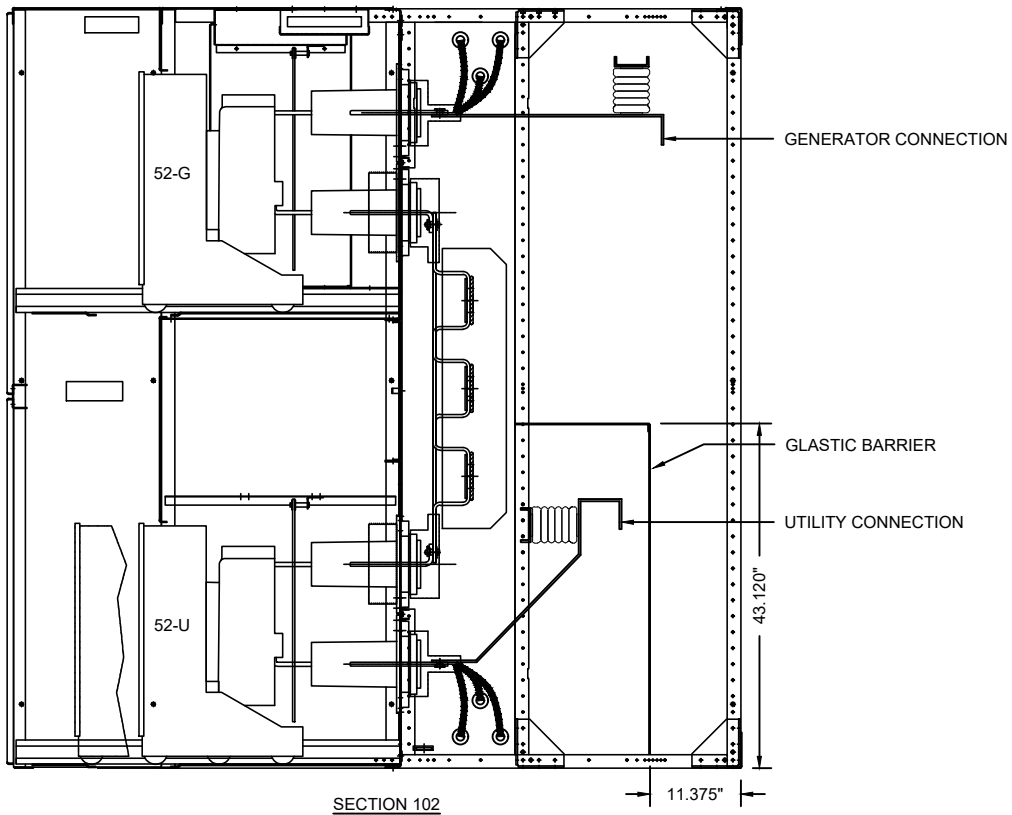
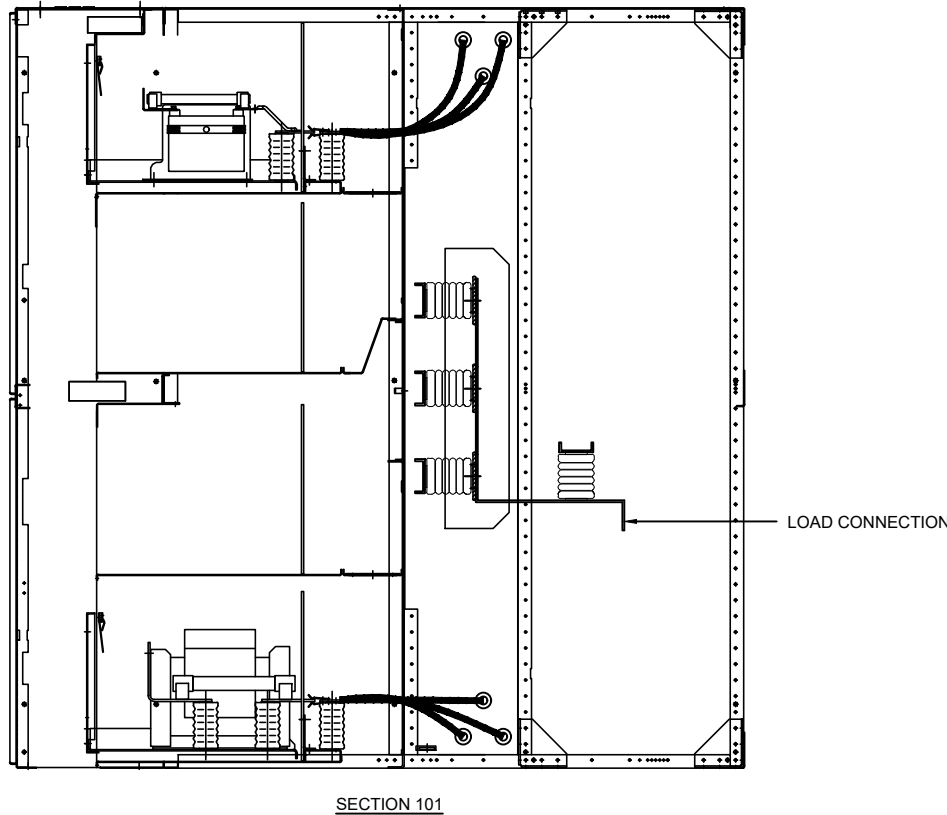
NO.	DATE	BY	REVISION DESCRIPTION
1	01/02/13	DK	AS-BUILT
JOB NAME:			SHEET TITLE:
TARGET LOGISTICS PARALLELING SWITCHGEAR WILLISTON, ND			PARALLELING SWITCHGEAR - ELEVATION DRAWING
DATE	DRAWN	CHECK BY	SCALE
11/01/12	DK	AF	NA
CONTRACTOR NAME			
ENGINEER NAME			
DISTRIBUTOR			ORDER NUMBER
CUMMINS NPOWER			0061769-1-1
			DRAWING NUMBER
			SE-13864-EL
			SHEET
			01


THIS DOCUMENT IS THE PROPERTY OF STATES MANUFACTURING IT CONTAINS PROPRIETARY AND CONFIDENTIAL INFORMATION WHICH MUST NOT BE DUPLICATED, USED OR DISCLOSED OTHER THAN AS EXPRESSLY AUTHORIZED BY STATES MANUFACTURING LOCATED IN MINNEAPOLIS, MINNESOTA.

8 7 6 5 4 3 2 1

H
G
F
E
D
C
B
A

H
G
F
E
D
C
B
A



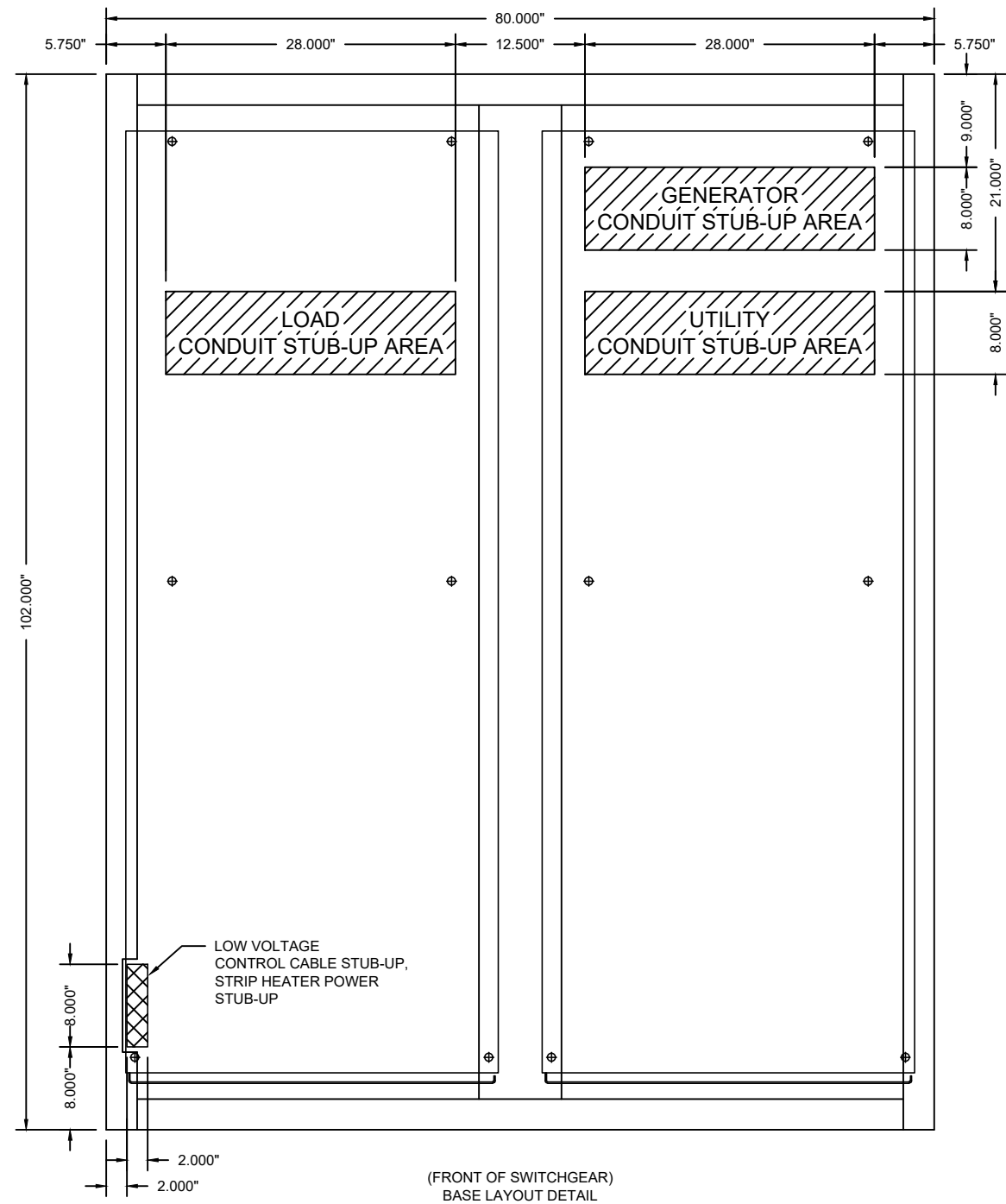
1	01/02/13	DK	AS-BUILT
NO.	DATE	BY	REVISION DESCRIPTION
JOB NAME:			SHEET TITLE:
TARGET LOGISTICS PARALLELING SWITCHGEAR WILLISTON, ND			PARALLELING SWITCHGEAR - SWITCHGEAR SECTION DRAWING
DATE	DRAWN	CHECK BY	SCALE
11/01/12	DK	AF	NA
CONTRACTOR NAME			
ENGINEER NAME			
DISTRIBUTOR			ORDER NUMBER
CUMMINS NPOWER			0061769-1-1
			DRAWING NUMBER
			SE-13864-EL
			SHEET
			02

THIS DOCUMENT IS THE PROPERTY OF STATES MANUFACTURING IT CONTAINS PROPRIETARY AND CONFIDENTIAL INFORMATION WHICH MUST NOT BE DUPLICATED, USED OR DISCLOSED OTHER THAN AS EXPRESSLY AUTHORIZED BY STATES MANUFACTURING LOCATED IN MINNEAPOLIS, MINNESOTA.

8 7 6 5 4 3 2 1

H
G
F
E
D
C
B
A

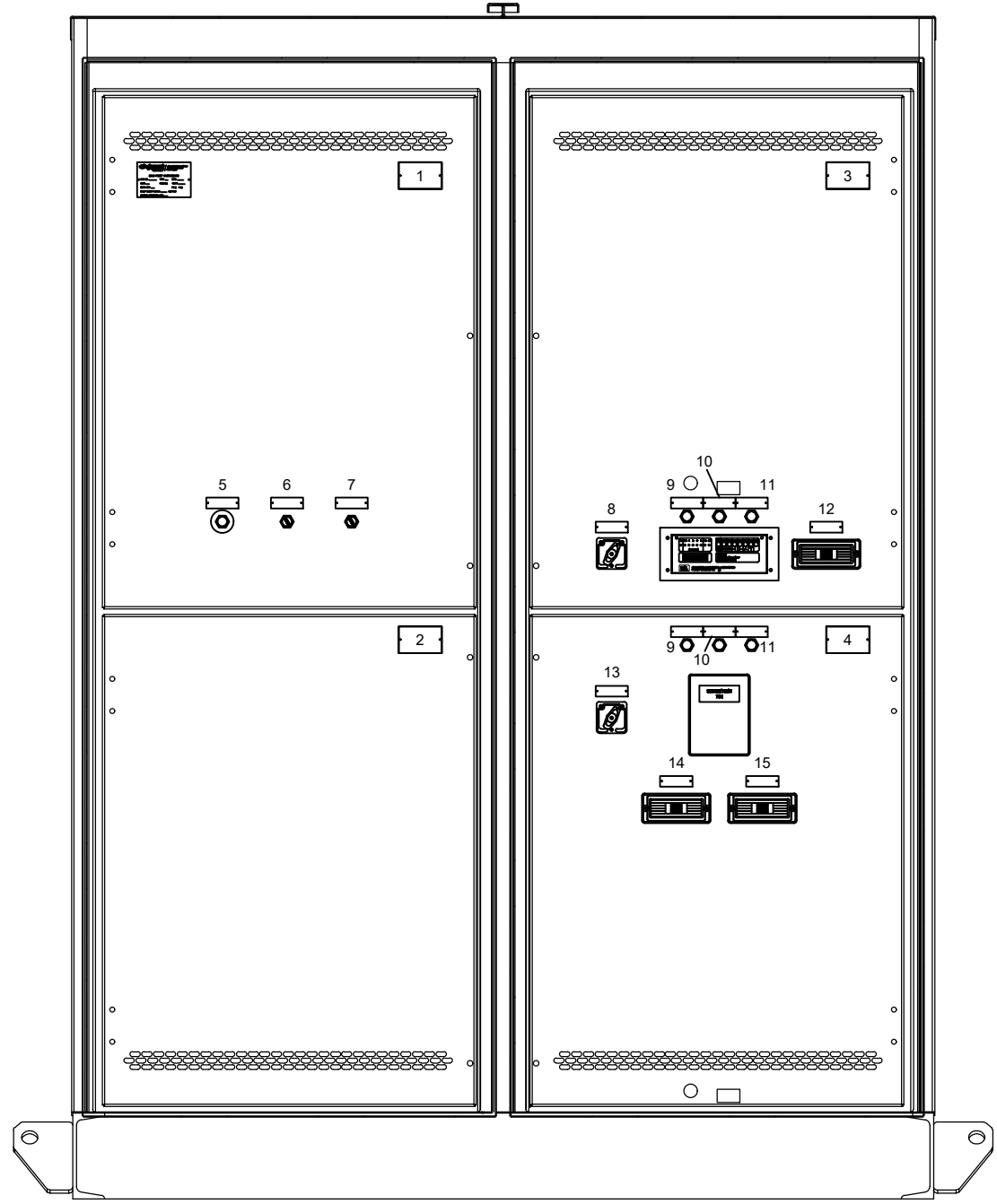
H
G
F
E
D
C
B
A



NO.	DATE	BY	REVISION DESCRIPTION
1	01/02/13	DK	AS-BUILT
JOB NAME:			SHEET TITLE:
TARGET LOGISTICS PARALLELING SWITCHGEAR WILLISTON, ND			PARALLELING SWITCHGEAR CONDUIT STUB-UP DRAWING
DATE	DRAWN	CHECK BY	SCALE
11/01/12	DK	AF	NA
CONTRACTOR NAME			
ENGINEER NAME			
DISTRIBUTOR			ORDER NUMBER
CUMMINS NPOWER			0061769-1-1
			DRAWING NUMBER
			SE-13864-EL
			SHEET
			03

THIS DOCUMENT IS THE PROPERTY OF STATES MANUFACTURING IT CONTAINS PROPRIETARY AND CONFIDENTIAL INFORMATION WHICH MUST NOT BE DUPLICATED, USED OR DISCLOSED OTHER THAN AS EXPRESSLY AUTHORIZED BY STATES MANUFACTURING LOCATED IN MINNEAPOLIS, MINNESOTA.

JOB No. 0061769-1-1, SE-13864		Customer: TARGET LOGISTICS				
NAMEPLATE SCHEDULE						
NO.	QTY	LINE 1	LINE 2	LINE 3	TX. SIZE	NP SIZE
1	1	GENERATOR	PTS		3/8"	2.5 X 4
2	1	UTILITY	PTS		3/8"	2.5 X 4
3	1	52-G			3/8"	2.5 X 4
4	1	52-U			3/8"	2.5 X 4
5	1	EMERGENCY STOP			7/32"	1 X 3
6	1	SYSTEM MODE	AUTO	MANUAL	7/32"	1 X 3
7	1	REMOTE TEST	ON	OFF	7/32"	1 X 3
8	1	52-G	LOCKOUT RELAY		7/32"	1 X 3
9	1	OPEN			7/32"	1 X 3
10	1	WITHDRAWN			7/32"	1 X 3
11	1	CLOSED			7/32"	1 X 3
12	1	TS1			7/32"	1 X 3
13	1	52-U	LOCKOUT RELAY		7/32"	1 X 3
14	1	TS2			7/32"	1 X 3
15	1	TS3			7/32"	1 X 3
NOTES:						
1 Nameplates shall be black with engraved white letters & attached with screws						



FRONT ELEVATION
(OUTER DOORS REMOVED)

NO.		DATE		BY		REVISION DESCRIPTION	
1	01/02/13	DK	AS-BUILT				
JOB NAME:						SHEET TITLE:	
TARGET LOGISTICS PARALLELING SWITCHGEAR WILLISTON, ND						PARALLELING SWITCHGEAR CONDUIT STUB-UP DRAWING	
DATE		DRAWN		CHECK BY		SCALE	
11/13/12		DK		AF		NA	
CONTRACTOR NAME						ENGINEER NAME	
CUMMINS NPOWER						CUMMINS NPOWER	
DISTRIBUTOR				ORDER NUMBER		DRAWING NUMBER	
CUMMINS NPOWER				0061769-1-1		SE-13864-EL	
						SHEET 04	

THIS DOCUMENT IS THE PROPERTY OF STATES MANUFACTURING IT CONTAINS PROPRIETARY AND CONFIDENTIAL INFORMATION WHICH MUST NOT BE DUPLICATED, USED OR DISCLOSED OTHER THAN AS EXPRESSLY AUTHORIZED BY STATES MANUFACTURING LOCATED IN MINNEAPOLIS, MINNESOTA.



TYPICAL FOR POWER COMMAND 3201 CONTROLLED GENSETS

TYPICAL INTERFACE TERMINAL BLOCK - SWGR SECTION 101

1	B+
2	B+
3	B+
4	B+
5	SWITCHED B+
6	SWITCHED B+
7	SWITCHED B+ - DELAYED OFF
8	SWITCHED B+ - DELAYED OFF
9	GROUND
10	GROUND
11	GROUND
12	GROUND
13	CUSTOMER SWITCH 1
14	CUSTOMER SWITCH 2
15	CUSTOMER SWITCH 3
16	CUSTOMER SWITCH 4
17	CUSTOMER SWITCH RTN
18	CUSTOMER SWITCH RTN
19	RELAY COIL SOURCE
20	RELAY COIL SOURCE
21	READY TO LOAD - N/D
22	READY TO LOAD - N/D
23	LOAD DUMP - N/D
24	SHUTDOWN ALARM - N/D
25	SPARE
26	SPARE
27	SPARE
28	MODEM - N/D
29	WARNING - N/D
30	LOCAL LOW FUEL SWITCH
31	LOCAL LOW FUEL RTN
32	MFSS
33	MFSS
34	LOAD DEMAND
35	SINGLE MODE
36	RAMP LOAD/UNLOAD
37	RMT LOW FUEL SWITCH
38	SWITCH RTN
39	SWITCH RTN
40	SYNC ENABLE
41	EXTERNAL KW+
42	EXTERNAL KW-
43	EXTERNAL KVAR+
44	EXTERNAL KVAR-
45	EXTERNAL KW/KVAR SHLD
46	AUTO MODE - N/D
47	GND FAULT SWITCH
48	GND FAULT RTN
49	GND FAULT METER INPUT
50	GND FAULT METER RTN
51	LOAD SHARE KW +
52	LOAD SHARE KW -
53	LOAD SHARE KVAR +
54	LOAD SHARE KVAR -
55	LOAD SHARE SHLD
56	GEN CB AUX - A
57	GEN CB AUX TRIP/CLOSE INHIB
58	GEN CB AUX - RTN
59	OPEN GEN CB - N/C
60	OPEN GEN CB - CDM
61	CLOSE GEN CB - N/C
62	CLOSE GEN CB - CDM
63	UTILITY CB AUX - A
64	UTILITY CB INHIB
65	UTILITY CB RTN
66	OPEN UTILITY CB - N/C
67	OPEN UTILITY CB - CDM
68	CLOSE UTILITY CB - N/C
69	CLOSE UTILITY CB - CDM
70	UTILITY CT INPUT
71	NO CONNECTION
72	UTILITY CT RTN

IB6

1	BATT +24VDC
2	BATT -24VDC
3	N/C
4	DATA 1
5	DATA 2
6	NET POWER +
7	NET POWER +
8	NET POWER -
9	NET POWER -

IB8

1	REMOTE E-STOP - B
2	REMOTE E-STOP - CDM
3	REMOTE START TYPE
4	REMOTE START - N/D
5	REMOTE START - CDM

NOTE 5
BUS PT MODULE

IB14

1	GROUND
2	B+
3	FIRST START
4	READY TO LOAD

IB1

1	BUS VOLTAGE A PHASE
2	BUS VOLTAGE B PHASE
3	BUS VOLTAGE C PHASE
4	BUS VOLTAGE NEUTRAL

IB13

1	
2	
3	
4	

ITB3

1	B+
9	GROUND
15	CUSTOMER SWITCH 3
16	CUSTOMER SWITCH 4
17	CUSTOMER SWITCH RTN
34	LOAD DEMAND
38	SWITCH RTN
56	GEN CB AUX - A
58	GEN CB AUX/TRIP/CLOSE INHIB - RTN
60	OPEN GEN CB - CDM
62	CLOSE GEN CB - CDM
63	UTILITY CB AUX - A
65	UTILITY CB AUX - RTN
67	OPEN UTILITY CB - CDM
69	CLOSE UTILITY CB - CDM
70	UTILITY CT INPUT
72	UTILITY CT - RTN

ITB8

1	REMOTE E-STOP - B
2	REMOTE E-STOP - CDM
4	REMOTE START - N/D
5	REMOTE START - CDM

IB1

1	BUS VOLTAGE A PH
2	BUS VOLTAGE B PH
3	BUS VOLTAGE C PH
4	GROUND

IBAC

L	CUSTOMER SUPPLIED 120VAC, 20A FOR STRIP HEATERS
N	
G	

QTY 4 - 14AWG STRANDED DC CONTROL WIRES

QTY 4 - 14AWG STRANDED AC CONTROL WIRES

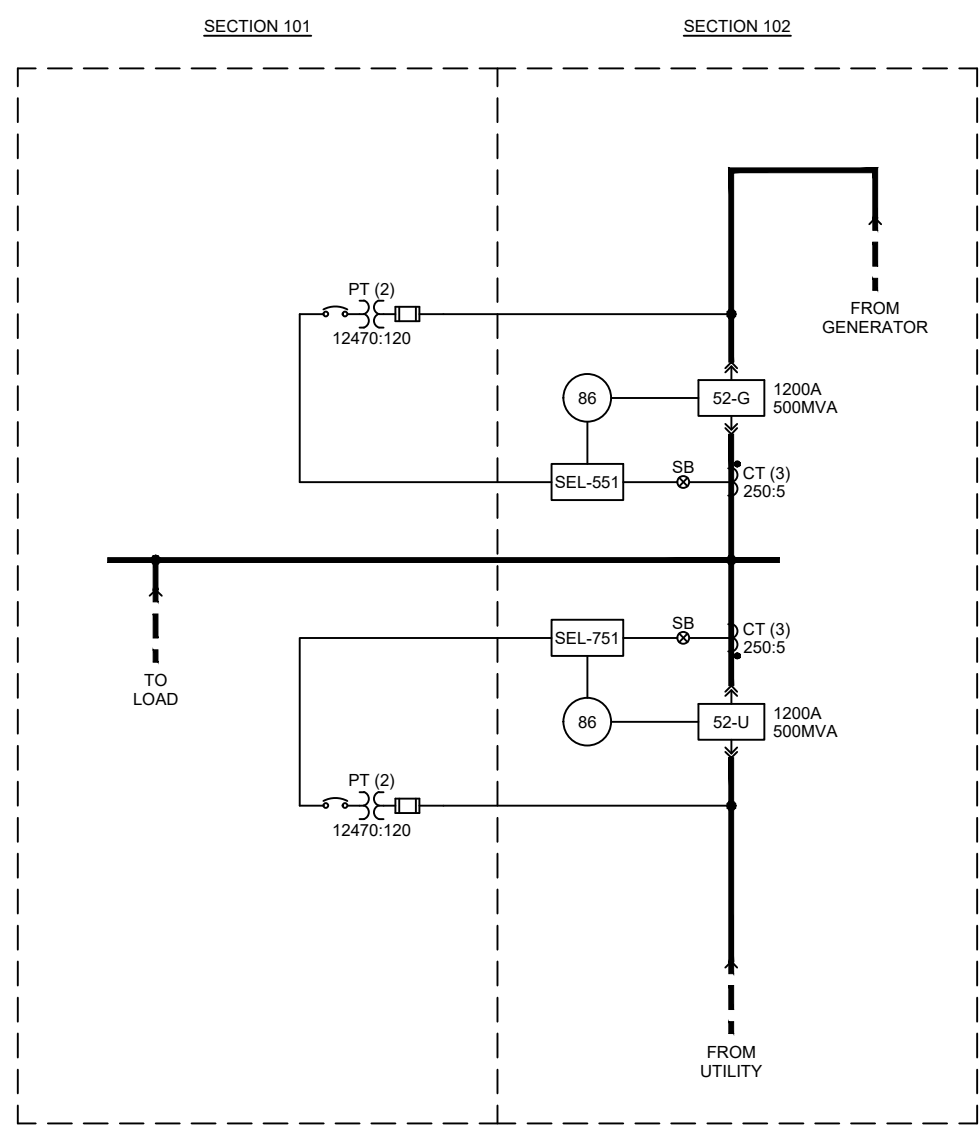
QTY 15 - 14AWG & 2 - 12AWG STRANDED DC CONTROL WIRES

- NOTES:
1. ALL INTERCONNECT WIRES MUST BE A MINIMUM OF 14AWG STRANDED WIRE UNLESS NOTED OTHERWISE. AC & DC CONTROL WIRING TO MUST BE RUN IN SEPARATE CONDUITS.
 2. TERMINAL BLOCKS ARE TENSION CLAMP STYLE RATED 600V, 25A, (QTY) 1) 26-12 AWG WIRE CAPACITY.
 3. ALL SWITCHGEAR AND CONTROLS ARE DESIGNED FOR A-B-C CLOCKWISE ROTATION.
 4. SIZE WIRES BASED ON LENGTH OF WIRE RUN. 20% SPARE WIRES IS RECOMMENDED.
 5. BUS PT MODULE VOLTAGE TO BE 120V/69

2	05/13/13	DK	REVISE PER FIELD START-UP		
1	01/02/13	DK	AS-BUILT		
NO.	DATE	BY	REVISION DESCRIPTION		
JOB NAME:			TARGET LOGISTICS PARALLELING SWITCHGEAR WILLISTON, ND	SHEET TITLE: PARALLELING SWITCHGEAR TITLE LINE 2 CUSTOMER INTERCONNECT	
DATE	11/05/12	DRAWN	DK	CHECK BY	AF
CONTRACTOR	NAME	SCALE	NA		
ENGINEER	NAME				
DISTRIBUTOR	CUMMINS NPOWER	ORDER NUMBER	0061769-1-1	DRAWING NUMBER	SE-13864-IC
		SHEET	01		

THIS DOCUMENT IS THE PROPERTY OF STATES MANUFACTURING IT CONTAINS PROPRIETARY AND CONFIDENTIAL INFORMATION WHICH MUST NOT BE DUPLICATED, USED OR DISCLOSED OTHER THAN AS EXPRESSLY AUTHORIZED BY STATES MANUFACTURING LOCATED IN MINNEAPOLIS, MINNESOTA.





NO.	DATE	BY	REVISION DESCRIPTION
1	01/02/13	DK	AS-BUILT
JOB NAME:			SHEET TITLE:
TARGET LOGISTICS PARALLELING SWITCHGEAR WILLISTON, ND			PARALLELING SWITCHGEAR ONE-LINE DIAGRAM
DATE	DRAWN	CHECK BY	SCALE
11/01/12	DK	AF	NA
CONTRACTOR NAME			
ENGINEER NAME			
DISTRIBUTOR			ORDER NUMBER
CUMMINS NPOWER			0061769-1-1
			DRAWING NUMBER
			SE-13864-OL
			SHEET
			01

THIS DOCUMENT IS THE PROPERTY OF STATES MANUFACTURING IT CONTAINS PROPRIETARY AND CONFIDENTIAL INFORMATION WHICH MUST NOT BE DUPLICATED, USED OR DISCLOSED OTHER THAN AS EXPRESSLY AUTHORIZED BY STATES MANUFACTURING LOCATED IN MINNEAPOLIS, MINNESOTA.

8

7

6

5

4

3

2

1

TARGET LOGISTICS

WILLISTON, ND

CUMMINS NPOWER

1200A, 15KV, 3PH, 3W - PARALLELING SWITCHGEAR

JOB# 0061769-1-1, DWG# SE-13864

DRAWING INDEX

SHEET #	REV#	DRAWING TITLE
0	1	DRAWING INDEX
EL-01	1	SWITCHGEAR ELEVATION
EL-02	1	SWITCHGEAR SIDE VIEW
EL-03	1	CONDUIT STUB-UP DRAWING
EL-04	1	NAMEPLATE SCHEDULE
OL-01	1	SYSTEM ONE LINE DIAGRAM
IC-01	2	CUSTOMER INTERCONNECT
SD-01	1	LOAD BUS AC SCHEMATIC
SD-02	1	52-G AC SCHEMATIC
SD-03	1	52-U AC SCHEMATIC
SD-10	1	52-G BREAKER CONTROL SCHEMATIC
SD-11	1	52-U BREAKER CONTROL SCHEMATIC
SD-20	1	DC SCHEMATIC
SD-21	1	DC SCHEMATIC
SD-30	1	AC ACCY SCHEMATIC

1				01/02/13		DK		AS-BUILT	
NO.	DATE	BY	REVISION DESCRIPTION						
JOB NAME:					SHEET TITLE:				
TARGET LOGISTICS					PARALLELING SWITCHGEAR				
PARALLELING SWITCHGEAR					TITLE LINE 2				
WILLISTON, ND					DRAWING INDEX				
DATE		DRAWN		CHECK BY		SCALE			
11/05/12		DK		AF		NA			
CONTRACTOR NAME									
ENGINEER NAME									
DISTRIBUTOR					ORDER NUMBER				
CUMMINS NPOWER					0061769-1-1				
DRAWING NUMBER					SHEET				
SE-13864-SD					00				

THIS DOCUMENT IS THE PROPERTY OF STATES MANUFACTURING IT CONTAINS PROPRIETARY AND CONFIDENTIAL INFORMATION WHICH MUST NOT BE DUPLICATED, USED OR DISCLOSED OTHER THAN AS EXPRESSLY AUTHORIZED BY STATES MANUFACTURING LOCATED IN MINNEAPOLIS, MINNESOTA.

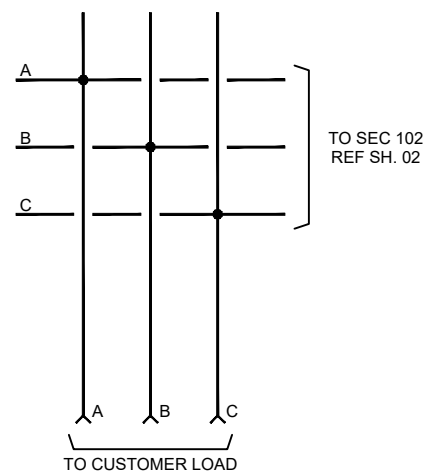


8 7 6 5 4 3 2 1

H
G
F
E
D
C
B
A

H
G
F
E
D
C
B
A

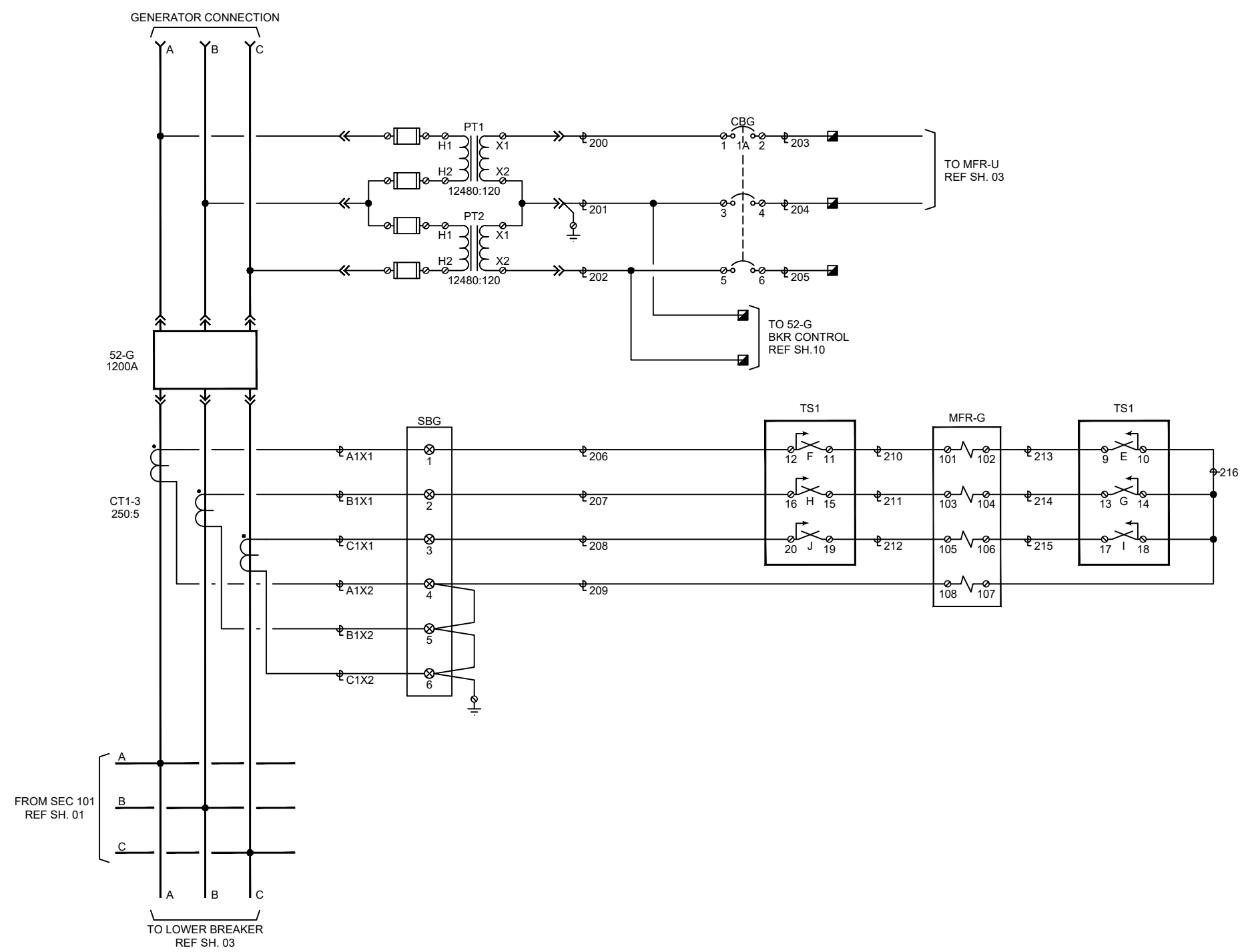
00
01
02
03
04
05
06
07
08
09
10
11
12
13
14
15
16
17
18
19
20
21
22
23
24
25
26
27
28
29



1	01/02/13	DK	AS-BUILT		
NO.	DATE	BY	REVISION DESCRIPTION		
JOB NAME:			TARGET LOGISTICS PARALLELING SWITCHGEAR WILLISTON, ND		SHEET TITLE: PARALLELING SWITCHGEAR TITLE LINE 2 SEC 101 AC SCHEMATIC
DATE	11/05/12	DRAWN	DK	CHECK BY	AF
CONTRACTOR	NAME		SCALE	NA	
ENGINEER	NAME				
DISTRIBUTOR	CUMMINS NPOWER		ORDER NUMBER	0061769-1-1	DRAWING NUMBER
			SE-13864-SD	SHEET	01

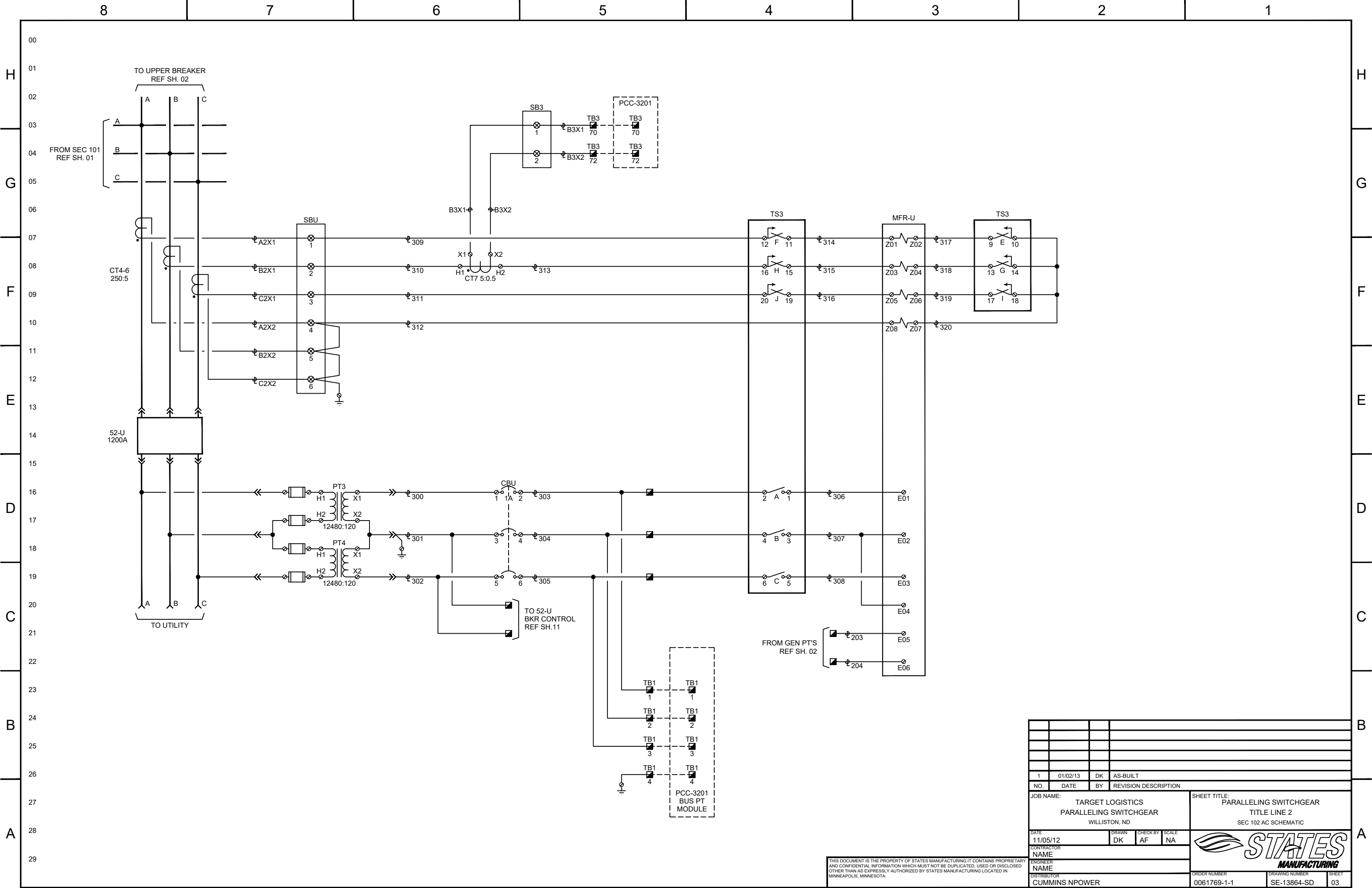
THIS DOCUMENT IS THE PROPERTY OF STATES MANUFACTURING IT CONTAINS PROPRIETARY AND CONFIDENTIAL INFORMATION WHICH MUST NOT BE DUPLICATED, USED OR DISCLOSED OTHER THAN AS EXPRESSLY AUTHORIZED BY STATES MANUFACTURING LOCATED IN MINNEAPOLIS, MINNESOTA.





NO.	DATE	BY	REVISION DESCRIPTION
1	01/02/13	DK	AS-BUILT
JOB NAME:			SHEET TITLE:
TARGET LOGISTICS PARALLELING SWITCHGEAR WILLISTON, ND			PARALLELING SWITCHGEAR TITLE LINE 2 SEC 102 AC SCHEMATIC
DATE	DRAWN	CHECK BY	SCALE
11/05/12	DK	AF	NA
CONTRACTOR NAME			
ENGINEER NAME			
DISTRIBUTOR			
CUMMINS NPOWER			ORDER NUMBER: 0061769-1-1 DRAWING NUMBER: SE-13864-SD SHEET: 02

THIS DOCUMENT IS THE PROPERTY OF STATES MANUFACTURING IT CONTAINS PROPRIETARY AND CONFIDENTIAL INFORMATION WHICH MUST NOT BE DUPLICATED, USED OR DISCLOSED OTHER THAN AS EXPRESSLY AUTHORIZED BY STATES MANUFACTURING LOCATED IN MINNEAPOLIS, MINNESOTA.

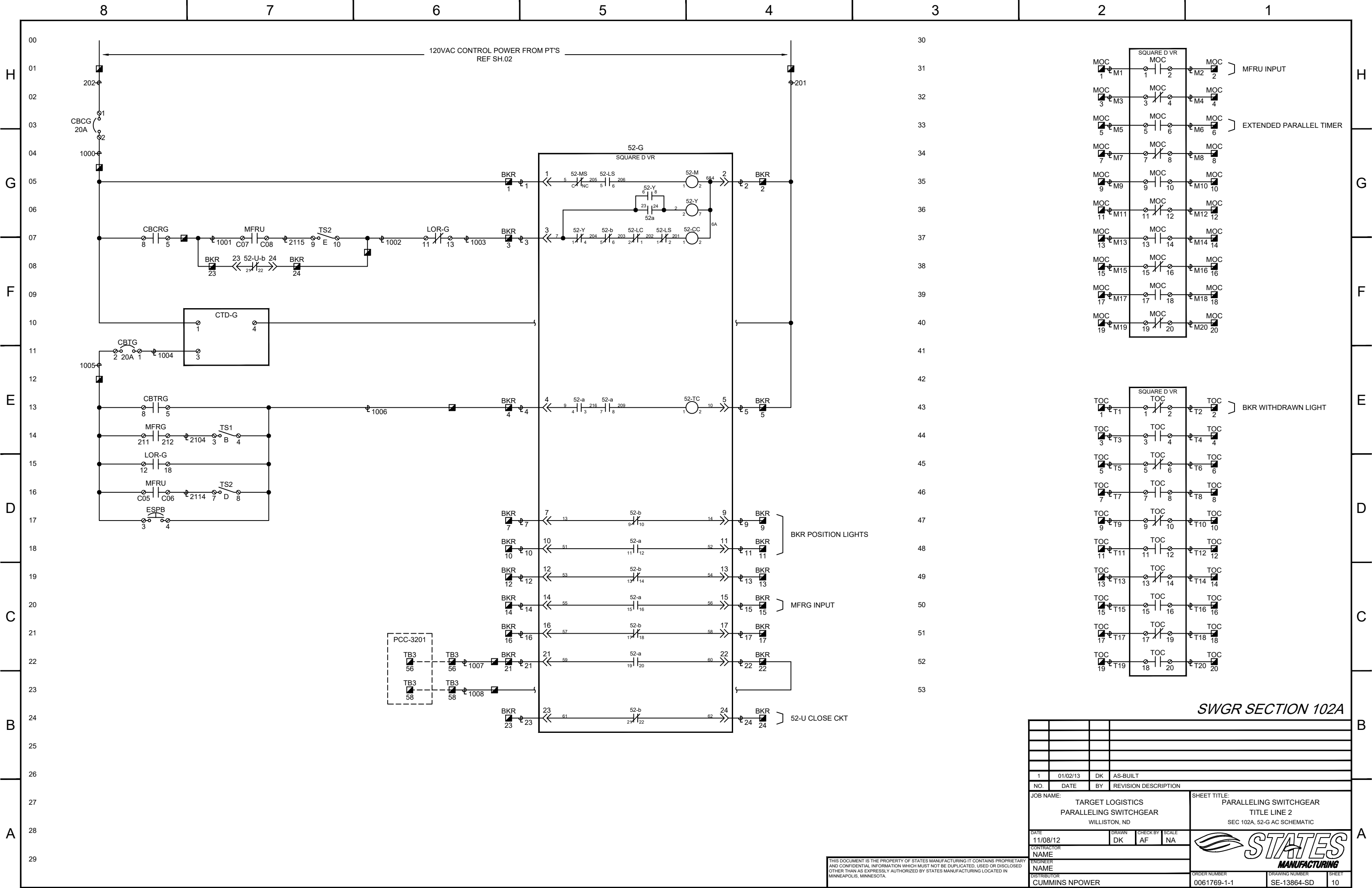


NO.	DATE	BY	REVISION DESCRIPTION
1	01/02/13	DK	AS-BUILT

JOB NAME:		SHEET TITLE:	
TARGET LOGISTICS PARALLELING SWITCHGEAR WILLISTON, ND		PARALLELING SWITCHGEAR TITLE LINE 2 SEC 102 AC SCHEMATIC	
DATE	DRAWN	CHECK BY	SCALE
11/05/12	DK	AF	NA
CONTRACTOR NAME		ENGINEER NAME	
CUMMINS NPOWER		CUMMINS NPOWER	
DISTRIBUTOR		ORDER NUMBER	DRAWING NUMBER
		0061769-1-1	SE-13864-SD
			SHEET 03

THIS DOCUMENT IS THE PROPERTY OF STATES MANUFACTURING IT CONTAINS PROPRIETARY AND CONFIDENTIAL INFORMATION WHICH MUST NOT BE DUPLICATED, USED OR DISCLOSED OTHER THAN AS EXPRESSLY AUTHORIZED BY STATES MANUFACTURING LOCATED IN MINNEAPOLIS, MINNESOTA.

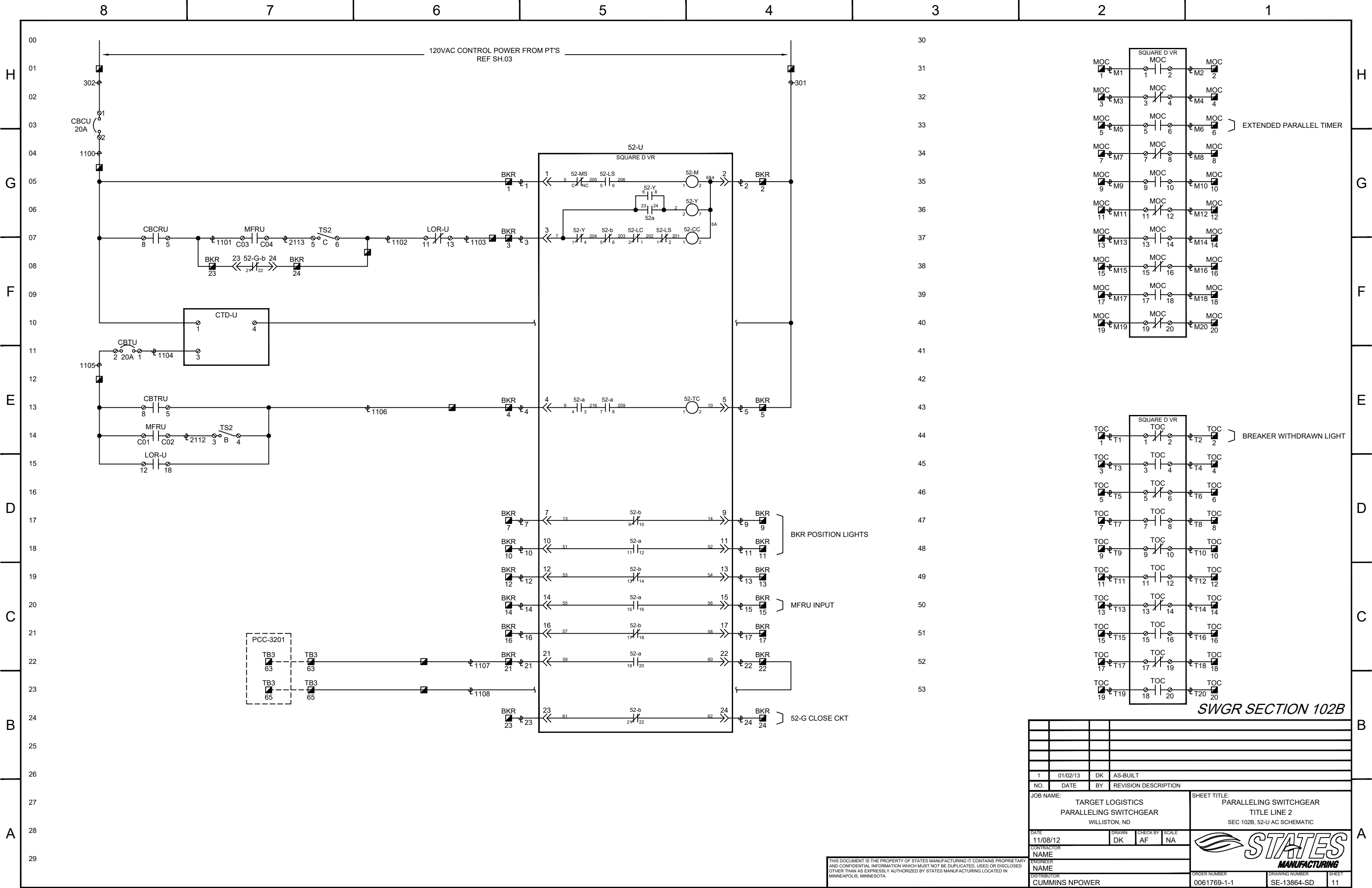




SWGR SECTION 102A

1				01/02/13				DK				AS-BUILT							
NO.	DATE	BY	REVISION DESCRIPTION																
JOB NAME:								SHEET TITLE:											
TARGET LOGISTICS								PARALLELING SWITCHGEAR											
WILLISTON, ND								TITLE LINE 2											
								SEC 102A, 52-G AC SCHEMATIC											
DATE				DRAWN				CHECK BY				SCALE							
11/08/12				DK				AF				NA							
CONTRACTOR																			
NAME																			
DISTRIBUTOR												ORDER NUMBER				SHEET			
CUMMINS NPOWER												0061769-1-1				SE-13864-SD 10			

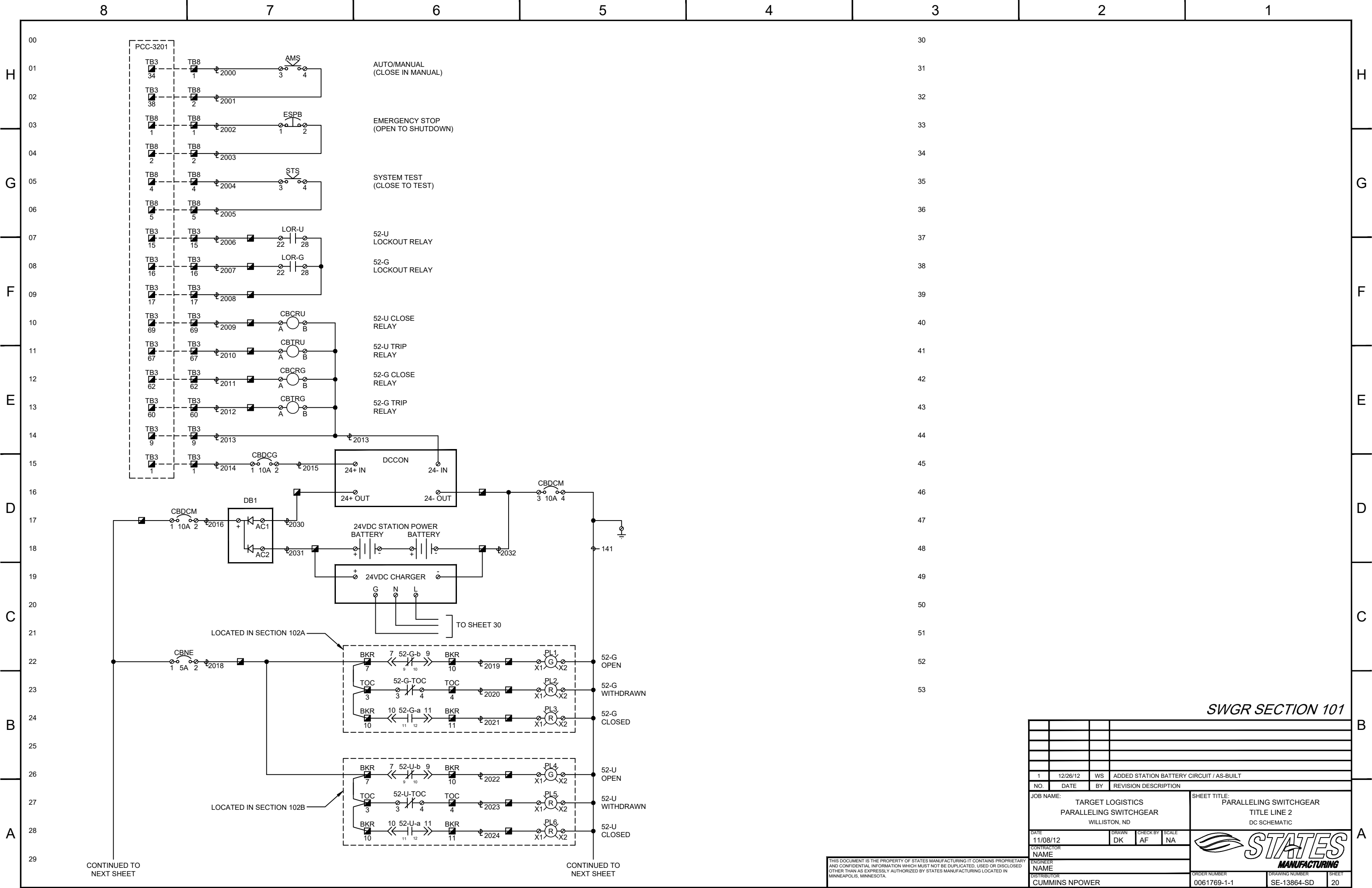
THIS DOCUMENT IS THE PROPERTY OF STATES MANUFACTURING IT CONTAINS PROPRIETARY AND CONFIDENTIAL INFORMATION WHICH MUST NOT BE DUPLICATED, USED OR DISCLOSED OTHER THAN AS EXPRESSLY AUTHORIZED BY STATES MANUFACTURING LOCATED IN MINNEAPOLIS, MINNESOTA.



SWGR SECTION 102B

1				01/02/13				DK				AS-BUILT											
NO.	DATE	BY	REVISION DESCRIPTION																				
JOB NAME:								SHEET TITLE:															
TARGET LOGISTICS								PARALLELING SWITCHGEAR															
WILLISTON, ND								TITLE LINE 2															
								SEC 102B, 52-U AC SCHEMATIC															
DATE				DRAWN				CHECK BY				SCALE											
11/08/12				DK				AF				NA											
CONTRACTOR NAME																							
ENGINEER NAME																							
DISTRIBUTOR												ORDER NUMBER				DRAWING NUMBER				SHEET			
CUMMINS NPOWER												0061769-1-1				SE-13864-SD				11			

THIS DOCUMENT IS THE PROPERTY OF STATES MANUFACTURING IT CONTAINS PROPRIETARY AND CONFIDENTIAL INFORMATION WHICH MUST NOT BE DUPLICATED, USED OR DISCLOSED OTHER THAN AS EXPRESSLY AUTHORIZED BY STATES MANUFACTURING LOCATED IN MINNEAPOLIS, MINNESOTA.



SWGR SECTION 101

NO.	DATE	BY	REVISION DESCRIPTION
1	12/26/12	WS	ADDED STATION BATTERY CIRCUIT / AS-BUILT

JOB NAME: TARGET LOGISTICS PARALLELING SWITCHGEAR WILLISTON, ND		SHEET TITLE: PARALLELING SWITCHGEAR TITLE LINE 2 DC SCHEMATIC	
DATE: 11/08/12	DRAWN: DK	CHECK BY: AF	SCALE: NA
CONTRACTOR NAME: STATES MANUFACTURING		DISTRIBUTOR: CUMMINS NPOWER	
ORDER NUMBER: 0061769-1-1		DRAWING NUMBER: SE-13864-SD	
		SHEET: 20	

THIS DOCUMENT IS THE PROPERTY OF STATES MANUFACTURING IT CONTAINS PROPRIETARY AND CONFIDENTIAL INFORMATION WHICH MUST NOT BE DUPLICATED, USED OR DISCLOSED OTHER THAN AS EXPRESSLY AUTHORIZED BY STATES MANUFACTURING LOCATED IN MINNEAPOLIS, MINNESOTA.

CONTINUED TO NEXT SHEET

CONTINUED TO NEXT SHEET

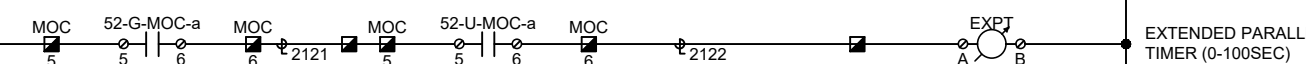
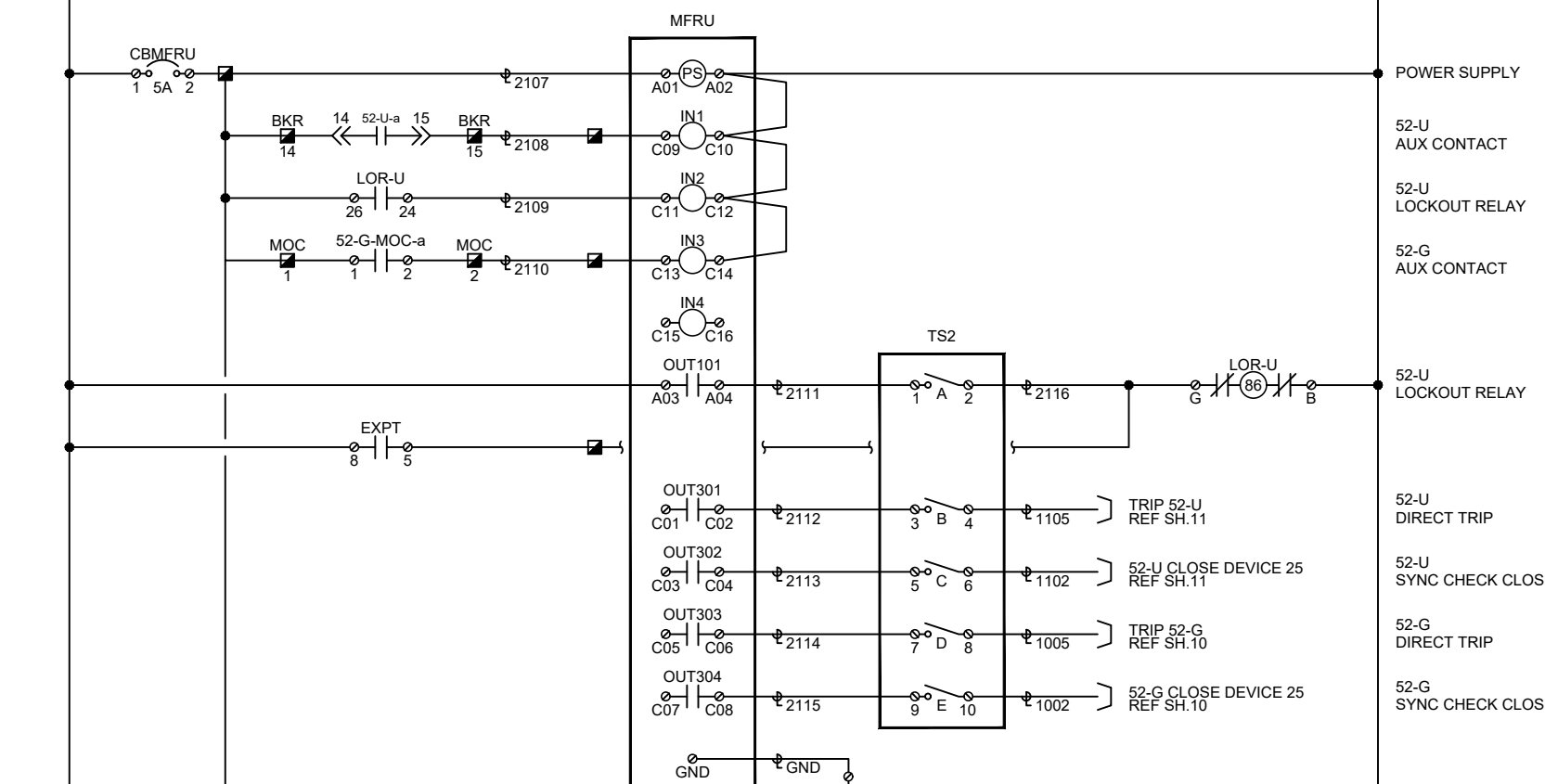
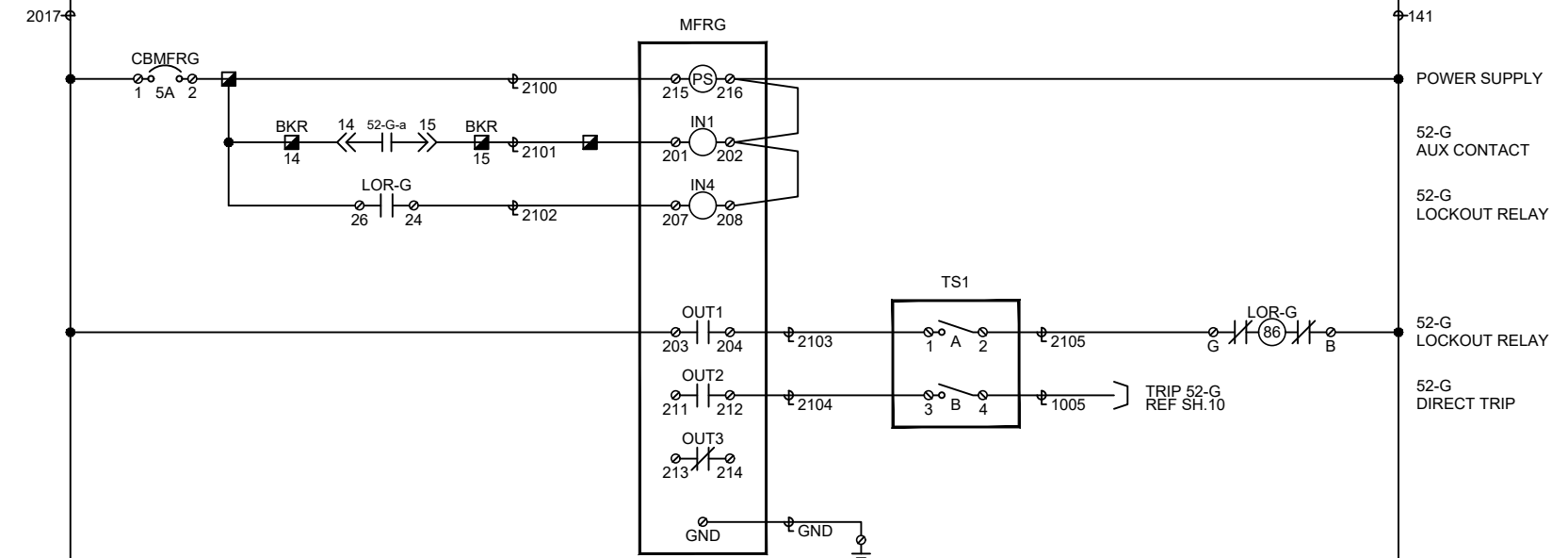
LOCATED IN SECTION 102A

LOCATED IN SECTION 102B

TO SHEET 30

CONTINUED TO NEXT SHEET

CONTINUED TO NEXT SHEET

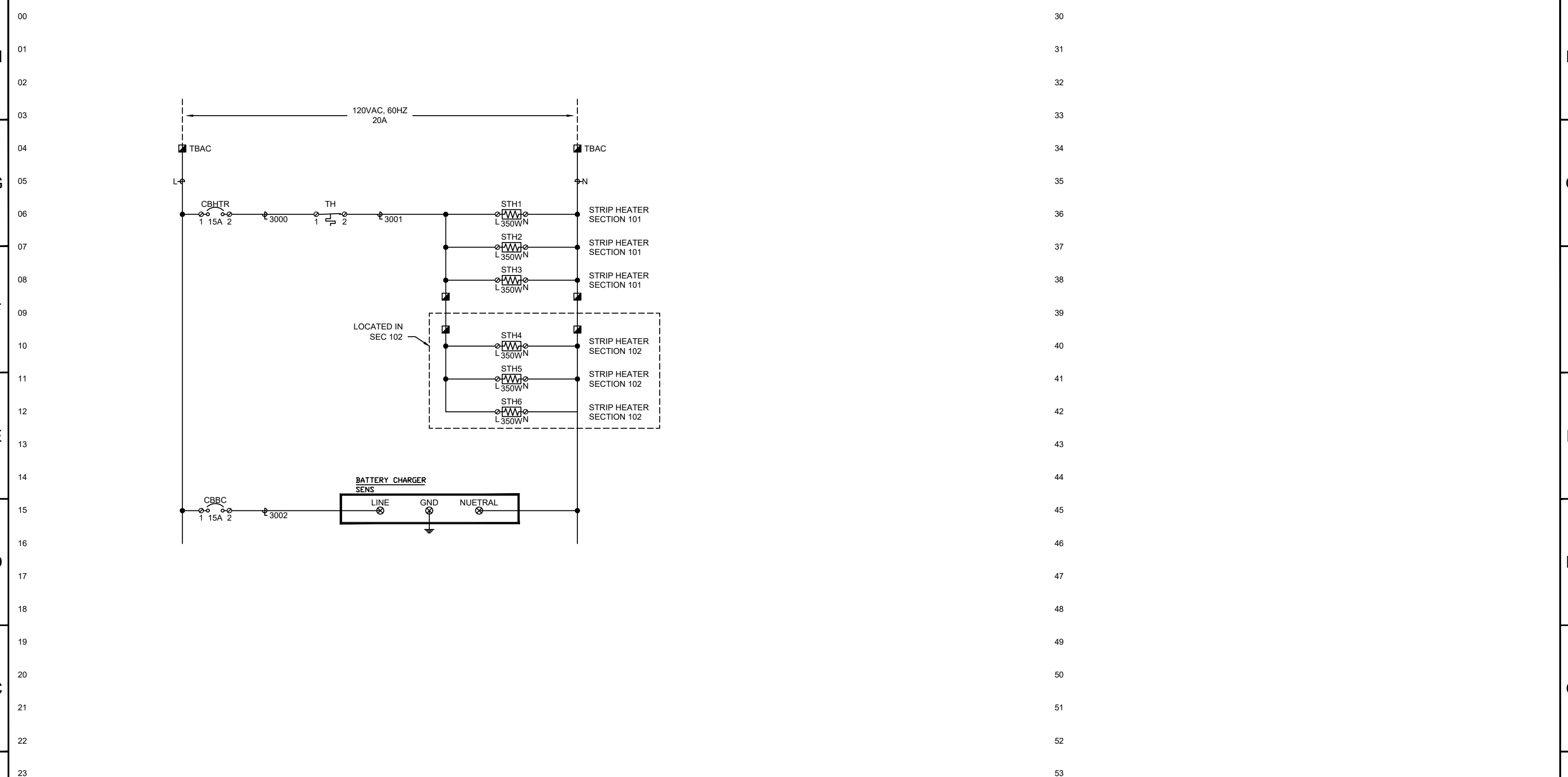


SWGR SECTION 102

1				01/02/13				DK				AS-BUILT															
NO.	DATE	BY	REVISION DESCRIPTION	SHEET TITLE: PARALLELING SWITCHGEAR TITLE LINE 2 DC SCHEMATIC																							
JOB NAME: TARGET LOGISTICS PARALLELING SWITCHGEAR WILLISTON, ND												DATE: 11/08/12				DRAWN: DK				CHECK BY: AF				SCALE: NA			
CONTRACTOR NAME												ENGINEER NAME															
DISTRIBUTOR: CUMMINS NPOWER												ORDER NUMBER: 0061769-1-1				DRAWING NUMBER: SE-13864-SD				SHEET: 21							

THIS DOCUMENT IS THE PROPERTY OF STATES MANUFACTURING IT CONTAINS PROPRIETARY AND CONFIDENTIAL INFORMATION WHICH MUST NOT BE DUPLICATED, USED OR DISCLOSED OTHER THAN AS EXPRESSLY AUTHORIZED BY STATES MANUFACTURING LOCATED IN MINNEAPOLIS, MINNESOTA.





SWGR SECTION 101 & 102

1				12/26/12	WS	ADDED BATTERY CHARGER CIRCUIT / AS-BUILT	
NO.	DATE	BY	REVISION DESCRIPTION				
JOB NAME:				TARGET LOGISTICS PARALLELING SWITCHGEAR WILLISTON, ND			
SHEET TITLE:				PARALLELING SWITCHGEAR TITLE LINE 2 AC ACCY SCHEMATIC			
DATE	11/08/12	DRAWN	DK	CHECK BY	AF	SCALE	NA
CONTRACTOR NAME				CUMMINS NPOWER			
ENGINEER NAME				CUMMINS NPOWER			
DISTRIBUTOR				ORDER NUMBER		SHEET	
				0061769-1-1		SE-13864-SD 30	

THIS DOCUMENT IS THE PROPERTY OF STATES MANUFACTURING IT CONTAINS PROPRIETARY AND CONFIDENTIAL INFORMATION WHICH MUST NOT BE DUPLICATED, USED OR DISCLOSED OTHER THAN AS EXPRESSLY AUTHORIZED BY STATES MANUFACTURING LOCATED IN MINNEAPOLIS, MINNESOTA.



H
G
F
E
D
C
B
A

H
G
F
E
D
C
B
A

30
31
32
33
34
35
36
37
38
39
40
41
42
43
44
45
46
47
48
49
50
51
52
53