

WEIGHT AND CENTER OF GRAVITY	DIMENSIONS MM (IN)			WEIGHT kg (lbs)
	A	B	C	
100KW CAPACITY FRAME- 1 50KW UPM INSTALLED	842 [33.1]	537 [21.1]	276 [10.8]	344 [759]
100KW CAPACITY FRAME- 2 50KW UPM INSTALLED	921 [36.3]	537 [21.1]	276 [10.8]	408 [899]
100KW REDUNDANT FRAME- 1 50KW UPM INSTALLED	845 [33.3]	537 [21.1]	276 [10.8]	350 [772]
100KW REDUNDANT FRAME- 2 50KW UPM INSTALLED	922 [36.3]	537 [21.1]	276 [10.8]	414 [912]
100KW REDUNDANT FRAME- 3 50KW UPM INSTALLED	1022 [40.2]	537 [21.1]	276 [10.8]	478 [1053]

PRODUCT SPECIFICATIONS								
UPS RATING	AC INPUT VOLTAGE	AC OUTPUT VOLTAGE	AC INPUT/ BYPASS CURRENT	AC OUTPUT CURRENT	MAX HEAT DISSIPATION AT 100% LOAD	DC INPUT VOLTAGE	DC INPUT CURRENT (432/480V)	
KVA	KW	V	V	AMP	AMP	KW [BTU/HR]	V	AMP
20	20	480	480	35	24	0.75 [2550]	432/480	50/45
30	30			48	36	1.05 [3580]		74/67
40	40			60	48	1.34 [4560]		99/89
50	50			73	60	1.67 [5700]		124/111
60	60			94	72	2.10 [7164]		149/134
70	70			108	84	2.45 [8358]		165/156
80	80			120	96	2.67 [9121]		198/178
90	90			133	108	3.01 [10261]		223/200
100	100			146	120	3.34 [11402]		247/223

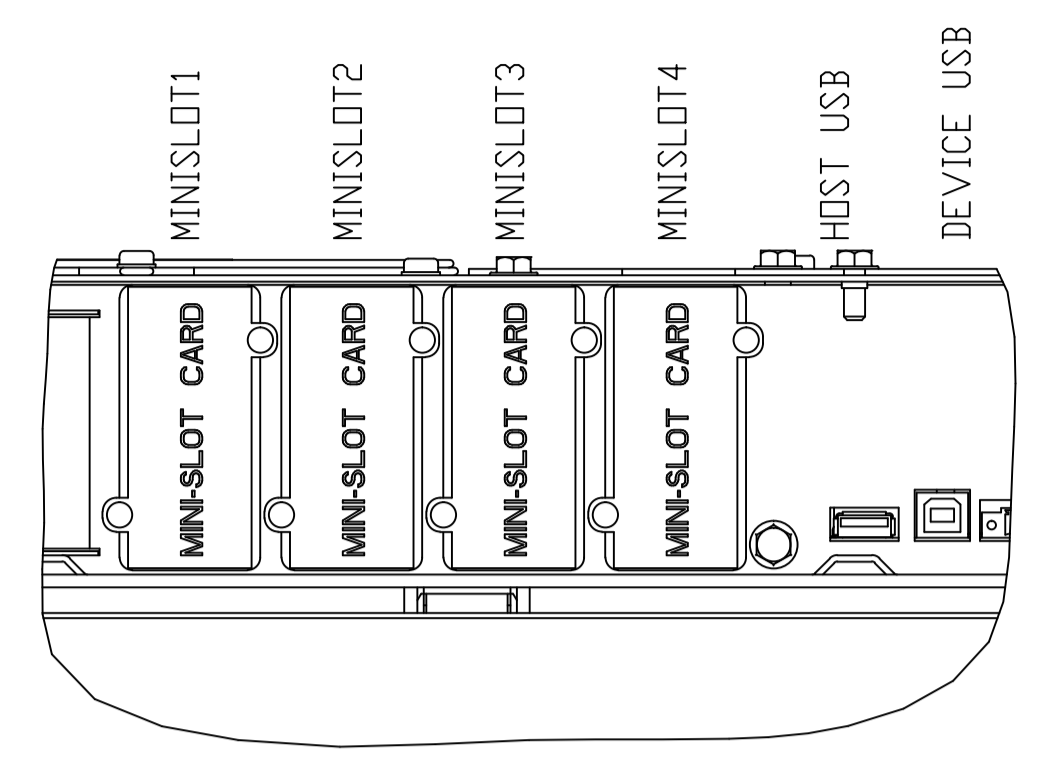
CUSTOMER WIRING			
WIRES	ACCEPTED WIRE RANGE	TORQUE RATING N.M (LB.IN)	RECOMMENDED MINIMUM WIRE SIZE FOR 75 DEG C COPPER STRANDED WIRE (WIRE SIZES ARE FOR 100KW)
INPUT PHASE WIRES	(2) 6 AWG-250MCM PER PHASE	31 [275]	(1) 4/0 PER PHASE
BYPASS PHASE WIRES			(1) 4/0 PER PHASE
OUTPUT PHASE WIRES			(1) 2/0 PER PHASE
DC INPUT FROM BATTERY	(4) 6 AWG-250MCM		BATTERY CABINET DEPENDENT
GROUND WIRES (INPUT, BYPASS, AND OUTPUT)	(6) 14 AWG-1/0	8 AWG	4.5 [40]
		4 AWG-6 AWG	5.1 [45]
		3 AWG-1/0	5.6 [50]
GROUND WIRES (BATTERY)	(6) 14 AWG-1/0	8 AWG	4.5 [40]
		4 AWG-6 AWG	5.1 [45]
	3 AWG-1/0	5.6 [50]	(1) 4 AWG
CONTROL WIRE (DETAIL C)	12-22 AWG	0.56-0.79 [5-7]	TWISTED PAIR WIRES 18AWG
CONTROL WIRE (DETAIL B,D)	14-30 AWG	0.22-0.25 [2]	

- NOTES:
- THE SYSTEM MUST BE INSTALLED ON A LEVEL FLOOR SURFACE SUITABLE FOR COMPUTER OR ELECTRONIC EQUIPMENT.
  - UPS COMES WITH REMOVABLE BOTTOM ENTRY CONDUIT LANDING PLATE. TOP ENTRY POWER CONDUIT LANDING IS THROUGH AN OPTIONAL SIDE CAR. REFER DRAWING P-110000128 FOR TOP ENTRY CONDUIT LANDING OPTION.
  - CONTROL WIRE ENTRY THROUGH REMOVABLE CONTROL LANDING PLATE.
  - THE SYSTEM MUST BE INSTALLED IN A TEMPERATURE AND HUMIDITY CONTROLLED INDOOR AREA FREE OF CONDUCTIVE CONTAMINANTS.
  - AMBIENT TEMPERATURE RANGE 5-40degC [41-104degF] AT AN ELEVATION UP TO 1500M WITHOUT DERATING. STORAGE TEMPERATURE -25 to +55degC. RELATIVE HUMIDITY (OPERATING AND STORAGE) 5% TO 95% MAX NON CONDENSING.
  - UPS CABINET CLEARANCES:  
 FRONT OF THE CABINET: 914mm[36.0"]  
 FROM TOP OF THE CABINET: 457mm[18.0"] ALWAYS IN ZONE-1 AND ZONE-3  
 ZONE-2 CAN BE LESS THAN 457mm[18.0"] WITH REAR SERVICE ACCESS  
 FROM BACK OF THE CABINET WITH REAR EXHAUST: 254mm[10.0"]
  - MINIMUM REQUIRED AIR FLOW FOR CABINET AT FULL LOAD IS 800 CFM.
  - THE UPS CABINET CAN BE INSTALLED IN LINE-UP-AND-MATCH OR STANDALONE CONFIGURATIONS.
  - ALL WIRING IN ACCORDANCE WITH NATIONAL AND LOCAL ELECTRIC CODES.
  - WEIGHT OF THE CABINET DOES NOT INCLUDE CUSTOMER WIRING.
  - AC INPUT TO UPS RECTIFIER: 3 PHASES, GROUND, WYE.  
 AC OUTPUT TO LOAD: 3 PHASES, GROUND.  
 AC INPUT TO UPS BYPASS: 3 PHASES, GROUND, WYE.  
 DC INPUT TO UPS (EXTERNAL BATTERY ONLY): POSITIVE, NEGATIVE, GROUND.
  - SPECIFICATIONS ARE SUBJECT TO CHANGE.

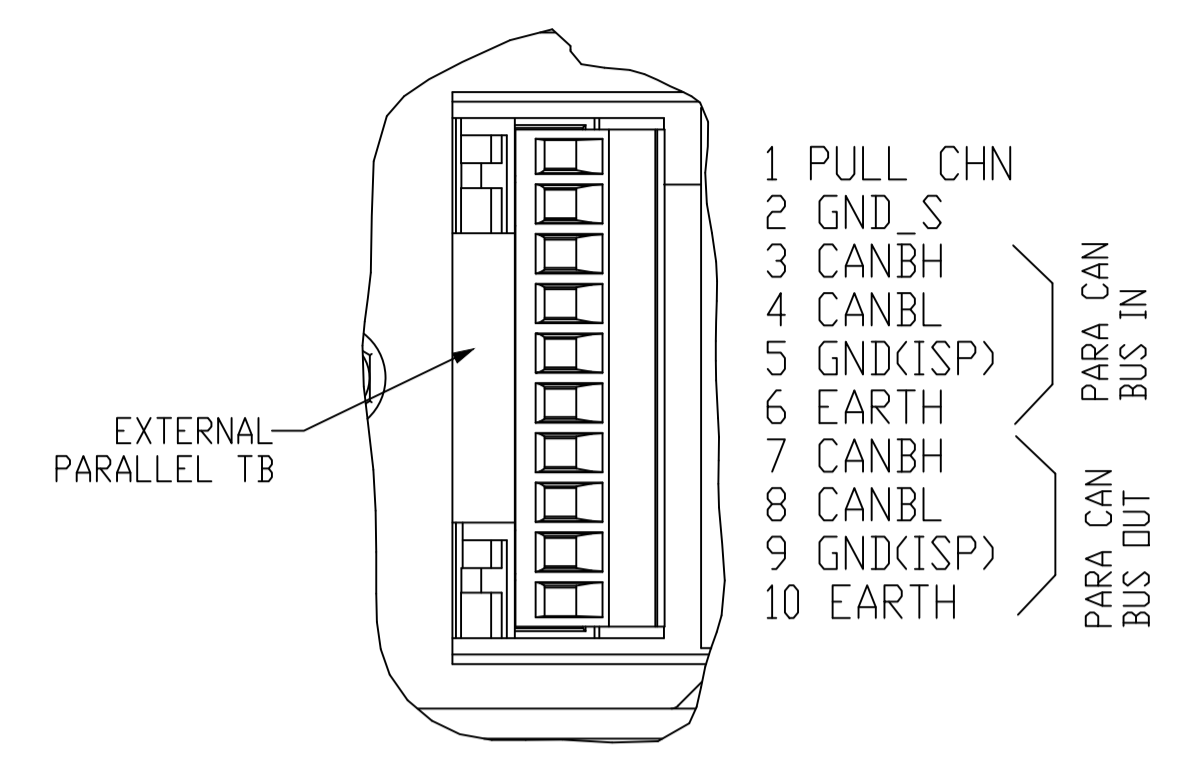
METRIC	EATON CORPORATION	EATON
DIMENSIONS ARE IN MILLIMETERS AFTER PLATING DIMENSIONS AND TOLERANCES IN ACCORDANCE WITH ASME Y14.5M-1994. SEE NOTES FOR TOLERANCES.		
DESCRIPTION: 93PM-100 FRAME UPS SITE PLAN		
ORIGINATED: RANDIEV_A	PRODUCT: 2012	ECD: ECD-135286
MODIFIED: MULE_V	20-FEB-2018	REVISION: 09
CHECKED:	DOCUMENT TYPE: P-110000120	STATE: RELEASE
SAFETY:	PROJ-E: DRAWING	SHEET: 1 OF 2
APPROVED:		

NOTICE TO PURCHASER: THIS DOCUMENT AND/OR TECHNICAL INFORMATION IS THE PROPERTY OF EATON CORPORATION AND IS LOANED TO YOU. IT IS NOT TO BE REPRODUCED OR TRANSMITTED IN ANY FORM OR BY ANY MEANS, ELECTRONIC OR MECHANICAL, INCLUDING PHOTOCOPYING, RECORDING, OR BY ANY INFORMATION STORAGE AND RETRIEVAL SYSTEM, WITHOUT THE WRITTEN CONSENT OF EATON CORPORATION. THIS DOCUMENT IS THE PROPERTY OF EATON CORPORATION AND IS LOANED TO YOU. IT IS NOT TO BE REPRODUCED OR TRANSMITTED IN ANY FORM OR BY ANY MEANS, ELECTRONIC OR MECHANICAL, INCLUDING PHOTOCOPYING, RECORDING, OR BY ANY INFORMATION STORAGE AND RETRIEVAL SYSTEM, WITHOUT THE WRITTEN CONSENT OF EATON CORPORATION.

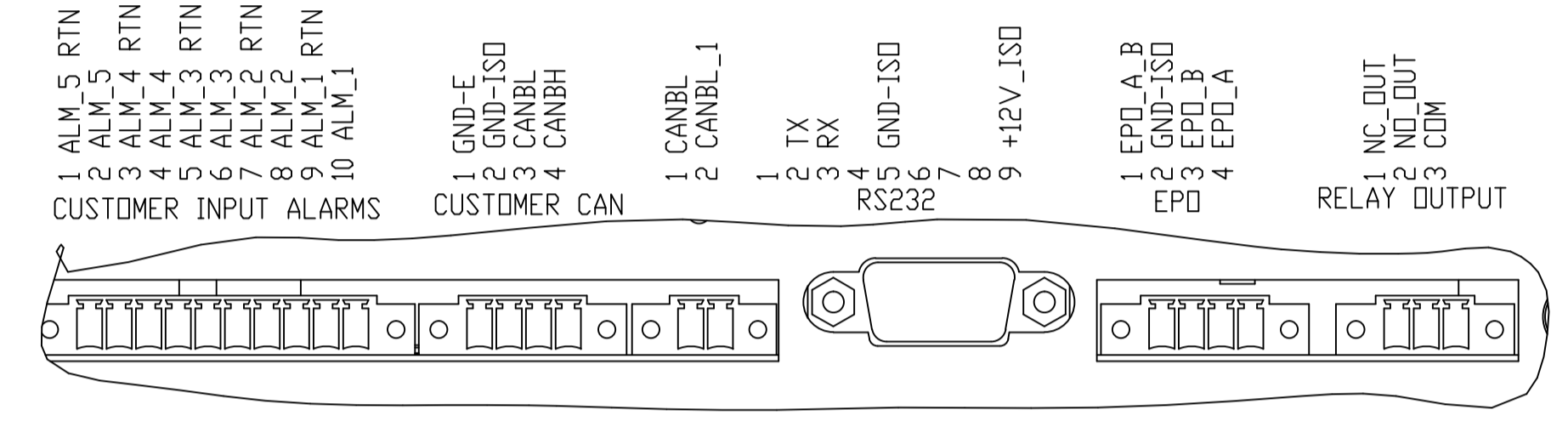
CUSTOMER CONTROL WIRE CONNECTIONS



DETAIL A

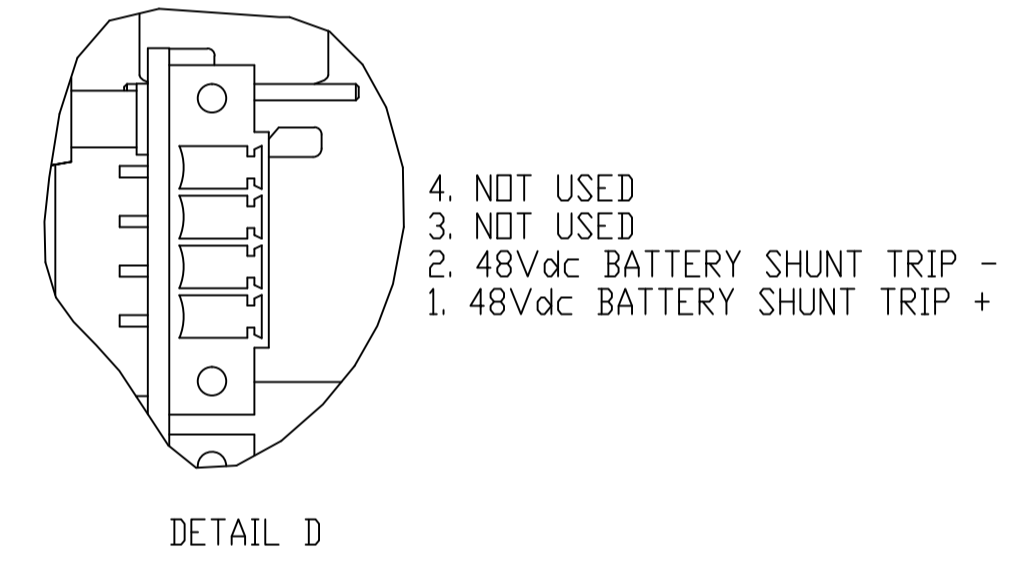


DETAIL C

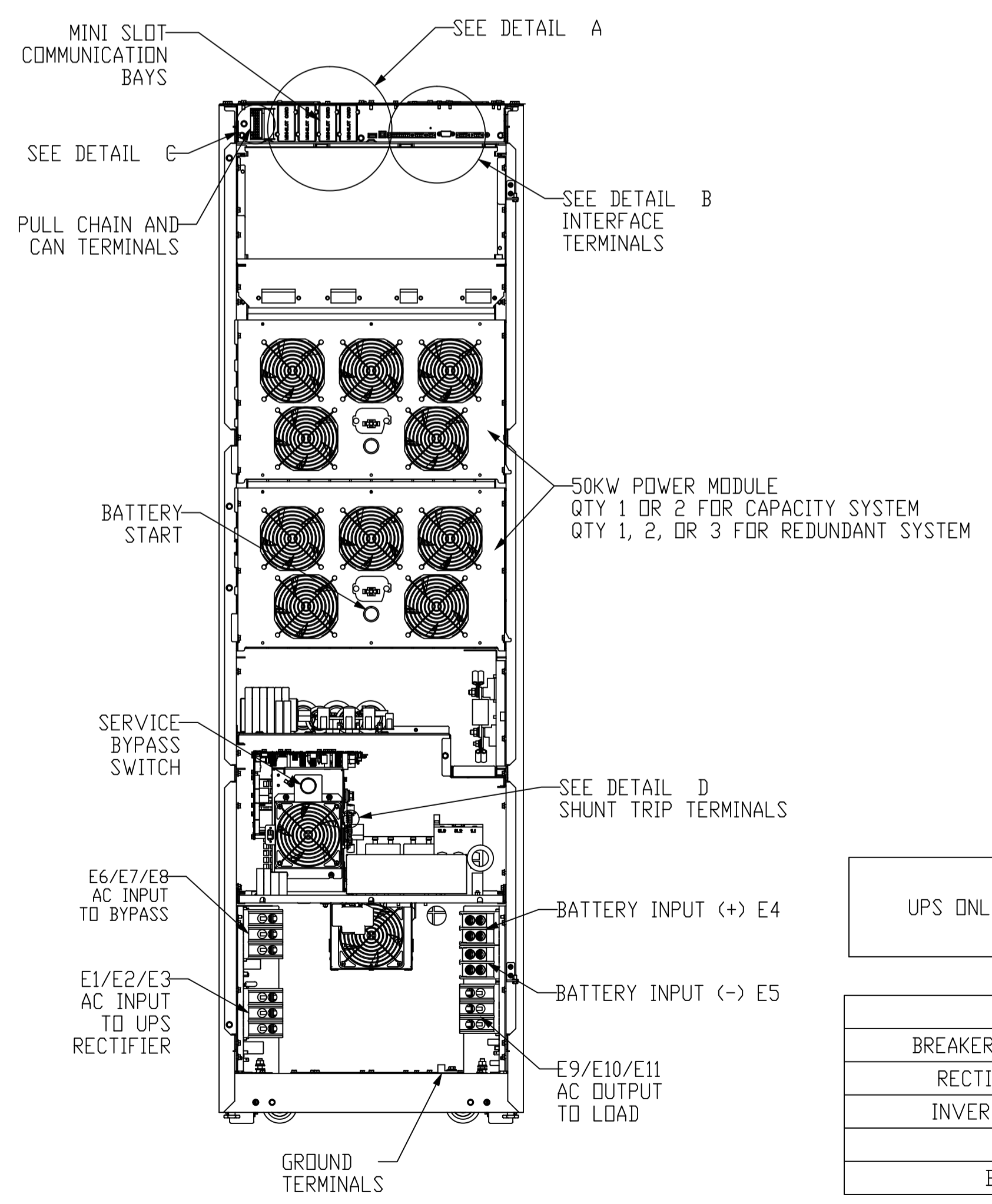


DETAIL B

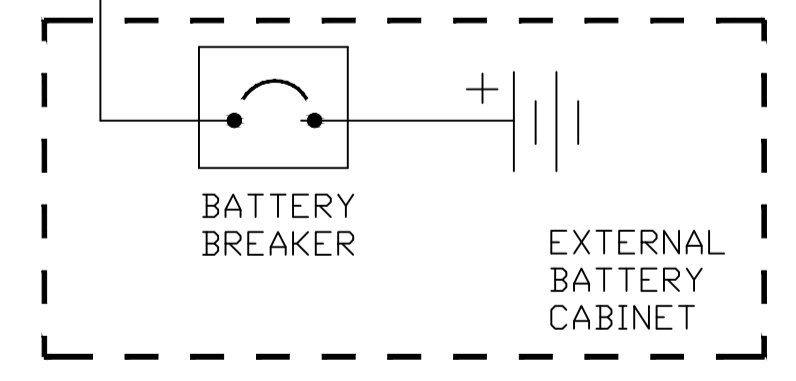
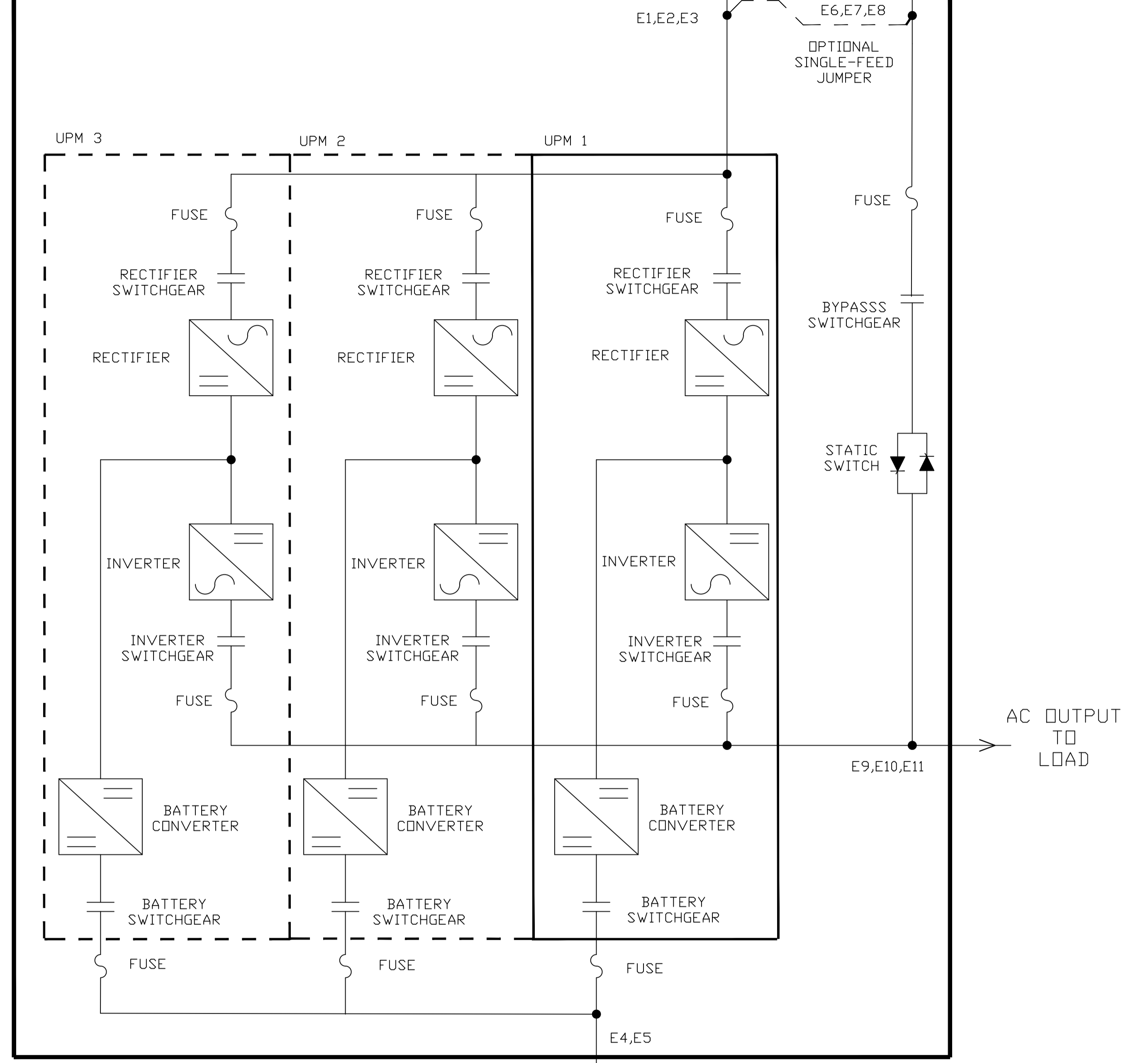
UPS SHUNT TRIP TERMINAL



FRONT VIEW W/D DOOR AND LOWER DEADFRONT



UPS CABINET



NOTE: AC INPUT TO RECTIFIER IS NOT USED IN SINGLE FEED CONFIGURATION. DASHED LINES INDICATE OPTIONAL FEATURES/COMPONENTS.

UPS ONLY	PACKAGED ENVELOPE DIMENSIONS MM [IN]		
	WIDTH	DEPTH	HEIGHT
	784 [30.87]	1230 [48.43]	1975 [77.76]

BREAKER AND FUSE INFORMATION - 93PM UPS			
BREAKER/FUSE APPLICATION	MANUFACTURER	PART NUMBER	QUANTITY/LOCATION
RECTIFIER INPUT FUSE	BUSSMAN	160FEE	3 PER POWER MODULE (UPM)
INVERTER OUTPUT FUSE	BUSSMAN	160FEE	3 PER POWER MODULE (UPM)
DC FUSE	BUSSMAN	FWH-200B	6 PER UPS
BYPASS FUSE	BUSSMAN	170M3420	3 PER UPS

METRIC EATON CORPORATION

THIRD ANGLE PROJECTION

DESCRIPTION: 93PM-100 FRAME UPS SITE PLAN

ORIGINATOR: RANDIEV\_A  
MODIFIED: MULE\_V  
CHECKED:  
SAFETY:  
APPROVED:

29OCT2012  
20-FEB-2018

ECD: ECD-135286  
DOCUMENT TYPE: P-110000120

REVISION: 09  
STATE: RELEASE

SCALE: 7/100  
SHEET: 2 OF 2

NOTICE TO PERSONS RECEIVING THIS DOCUMENT AND/OR TECHNICAL INFORMATION: THIS DOCUMENT, INCLUDING THE DRAWING AND INFORMATION CONTAINED THEREIN, IS CONFIDENTIAL AND IS THE EXCLUSIVE PROPERTY OF EATON CORPORATION AND IS HEREBY ON LOAN AND SUBJECT TO RECALL BY EATON AT ANY TIME. NO REPRODUCTION OR DISSEMINATION OF THIS DOCUMENT, OR ANY PART THEREOF, IS PERMITTED WITHOUT THE WRITTEN CONSENT OF EATON. IN THE CASE OF COMPLETING CONTRACTUAL OBLIGATIONS, THIS NOTICE SHALL COVER THE ENTIRETY OF THIS DOCUMENT.