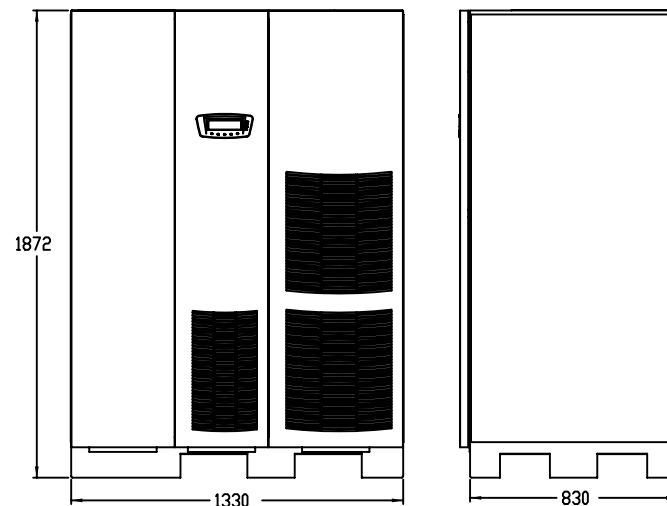
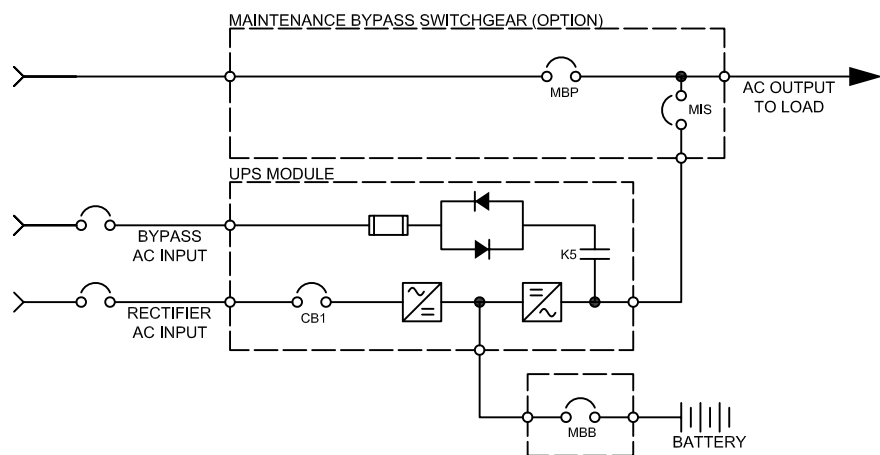


SITE PLANNING DATA, 9395, 275KVA, SINGLE MODULE SYSTEM



Notes:

1. Rectifier AC input current calculations: Continuous - 100% load without charging; Nameplate - 100% load with maximum charging.
2. Inverter AC output current calculation: Nameplate - 100% rated output load.
3. Bypass AC input current calculation is based on 100% rated output.
4. The system must be installed on a level floor suitable for computer or electronic equipment.
5. The system must be installed in a temperature and humidity controlled indoor area free of conductive contaminants.
6. Ambient temperature range: 0-40C (32-104F); Recommended operating range: 20-25C (68-77F); Maximum relative humidity: 95% non-condensing.
7. Minimum overhead clearance for ventilation above the UPS cabinet is 457mm (18in.).
8. Minimum 915mm (36in.) clearance in front of the UPS cabinet is required for cooling air intake and serving space.
9. The UPS cabinet can be installed in line-up-and-match or standalone configurations.
10. Top and bottom cable entries through removable access plates are standard for all configurations. Access plates shall be custom-modified to suit conduit sizes.
11. All wiring is to be in accordance with National and Local Electric Codes.
12. AC input to UPS rectifier (0.98 min.pF): (3) phases, (1) ground.
AC output to load: (3) phases, (1) neutral if required, (1) ground.
AC output to UPS: (3) phases, (1) neutral if required, (1) ground.
DC input from battery to UPS: (1) positive, (1) negative, (1) ground.
13. The front panels must be removed to meet the 830mm (or 32.7" depth) to fit through doors.
14. If the UPS is to be installed with the right side near a wall a minimum of 6" is required between the wall and the unit. If a battery cabinet is install to the right of the UPS the 6" are not required.
15. Specifications are subject to change.

Product Specifications

UPS Rating		AC Input Voltage	AC Output Voltage	Rectifier AC Input Current		Inverter AC Output Current	Max. Heat Dissipation at 100% Load	Dimensions WxDxH	Approx. Weight Unpacked	Floor Loading	Battery Nameplate Current (240 Cell, 2.00 V/cell)	Max. Battery Current at End of Discharging (240 Cell, 1.67V/cell)
				Continuous	Nameplate	Nameplate						
kVA	kW	VAC	VAC	AMP	AMP	AMP	kW(BTU/hr)	mm(in)	kg(lbs)	kg/m2(lb/ft2)	AMP	AMP
275	250	480	480	320	370	331	13.0(44330)	1330x830x1872 (52.4x32.7x73.7)	811(1786)	735(150)	551	660