

Accessorize your Eaton 93PM UPS



1 Slim/Sidecar Integrated Accessory Cabinet – Bypass (SIAC-B)*

- Allows the UPS to be removed while maintaining the critical load
- Small line-and-match footprint solution eliminates the need for conduit
- 2-, 3- and 4-breaker solutions available

2 Integrated Accessory Cabinet – Bypass (IAC-B) and Bypass Distribution (IAC-BD) (93PM 400 kW frame)

- Allows the UPS to be removed while maintaining the critical load
- Line-and-match configuration eliminates the need for conduit (remote configurations available)
- 2- and 3-breaker configurations available
- Up to four subfeed breakers available in the IAC-BD

3 Integrated Accessory Cabinet – Distribution (IAC-D)*

- Line-and-match configurations
- High-efficiency (TP-1) output transformer options
- Variety of 42-pole panel and sub-feed breaker configurations available

4 Integrated Battery Cabinet – Large (IBC-L)*

- Line-and-match configuration
- Offers a wide array of runtimes
- Remote configurations are available

5 Integrated Battery Cabinet – Small (IBC-S)

- Line-and-match configurations
- Offers a wide array of runtimes through 1-, 2- or 3-string configurations in a single cabinet solution
- Remote configurations are available
- IBC-S is only available for 100kW and below

6 Slim Integrated Accessory Cabinet – Tie (SIAC-T) with Maintenance Bypass for capacity configurations

- Line-and-match configurations
- Parallel up to 2 UPSs for capacity applications with optional MIS/MBP maintenance bypass configurations

7 Slim Integrated Accessory Cabinet – Tie (SIAC-T) (For redundant applications)

- Slim line-and-match configuration
- Parallel up to 2 UPSs in a redundant configuration with optional MIS (maintenance isolation switch)

8 Wall-Mount Maintenance Bypass and Tie Cabinets (not pictured)

- 2-, 3- and 4-breaker solutions available with wall-mount maintenance bypass
- Parallel up to 4 UPSs for capacity



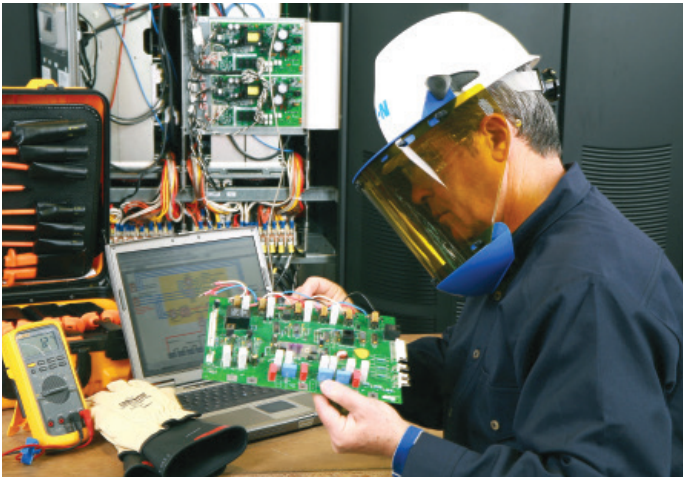
Powering Business Worldwide

* The 93PM accessories can be placed on either side of the UPS

Protect your 93PM

Warranty and service protection plan

Each Eaton® 93PM UPS includes a comprehensive one-year onsite support plan. The warranty and service protection plan provides an onsite 24x7 startup service with a full year of parts and labor, 24x7 onsite coverage and 8-hour response (U.S. only) along with complimentary operator training. In addition to this first year support, the 93PM UPS comes standard with one year of Eaton's PredictPulse™ remote monitoring service and a PowerXpert connectivity kit (upon enrollment) to deliver 24x7 monitoring from Eaton analysts and expedited response to critical alarms.

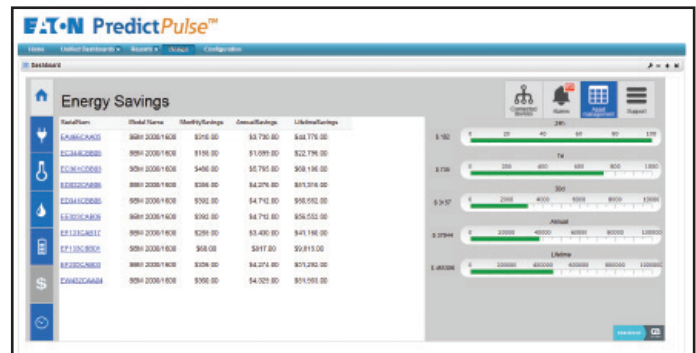


The 93PM warranty and service protection plan provides an onsite 24x7 startup service, coverage and 8-hour response along with complimentary operator training.

PredictPulse remote monitoring service

PredictPulse is a monitoring and management service that collects and analyzes data from connected power infrastructure devices, providing us with the insight needed to make recommendations and take action on your behalf.

Once activated, data from managed devices is analyzed by Eaton experts to determine if anything is out of the ordinary. This data also appears on your PredictPulse dashboard and if something needs attention, we'll notify you and how we recommend addressing it.



Eaton's PredictPulse energy-saving customer report.

For more information, please visit:
Eaton.com/93PM

Eaton
Electrical Sector
1000 Eaton Boulevard
Cleveland, OH 44122
United States
Eaton.com

Powerquality.eaton.com

© 2016 Eaton
All Rights Reserved
Printed in USA
Publication No. BR153007EN / GG
April 2016

Eaton is a registered trademark.

All other trademarks are property of their respective owners.

Follow us on social media to get the latest product and support information.

